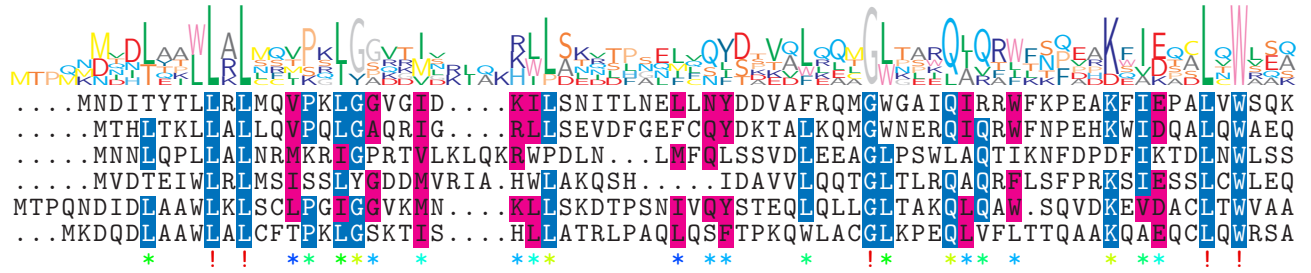


logo

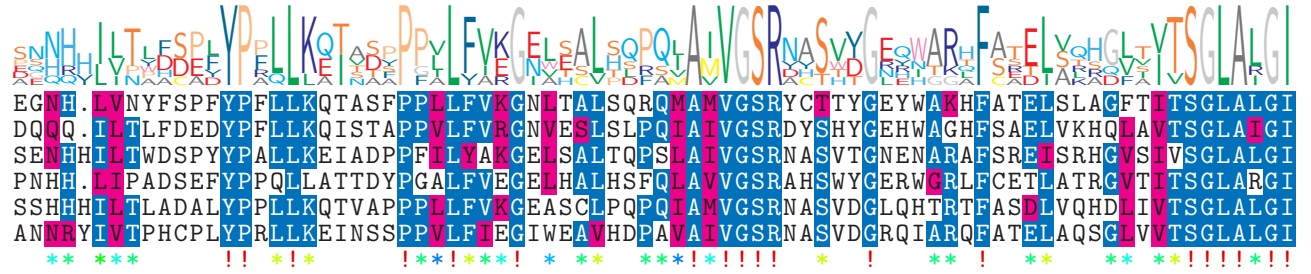
NTDB id 1361 HI 0985 AAC22646.1  
 NTDB id 1388 A4U84 RS04945 WP 062924099.1  
 NTDB id 1250 GC085 RS13065 WP 027219989.1  
 NTDB id 1152735 LQ135 RS13790 WP 000228517.1  
 NTDB id 1399 DSB67 RS15600 WP 010645755.1  
 NTDB id 1152 A1552VC RS00200 WP 000654772.1  
 consensus



...MNDITYTLTRIMQVPKLGGVGTID...KILSNITLNEILNYDDVAFRQMGWGAIQIRRFVKPEAKFTEPATVWSQK 72  
 ....MTHITKLLALLQVPQLGAQRIG...RLLSEVDFGFECQYDKTAKQKMGWNERQIQRFNPEHKWIDQALQWAEQ 71  
 ....MNNLQPLLALNRMKRIGPRTVLKQKRWFDLN...LMFQLSSVDLEEAGTIPSWLAQTIKNFDPDFIKTDLNWLSS 72  
 ....MVDTEIWLRLMSISSLYCTDMVRIA.HWTAKQSH...IDAVVLLQQTCLTLRCAQRTELSFPFRKSISSSLCWLEQ 69  
 MTPQNDDIDLAAWLKLKSLCPGIIGVKMN...KLLSKDTPSNIVQYSTEQLQLLGLTAKQLQAW.SQVDKEVDACLTVVAA 75  
 ...MKDQDILAAWLALCFTPCLKGSKTIS...HLLATRLPAQLQSQSTPKQWLACGLKPEQIVFLTTQAARKQAEQCQLWRSA 73

logo

NTDB id 1361 HI 0985 AAC22646.1  
 NTDB id 1388 A4U84 RS04945 WP 062924099.1  
 NTDB id 1250 GC085 RS13065 WP 027219989.1  
 NTDB id 1152735 LQ135 RS13790 WP 000228517.1  
 NTDB id 1399 DSB67 RS15600 WP 010645755.1  
 NTDB id 1152 A1552VC RS00200 WP 000654772.1  
 consensus



EGNH.LVNYFSPFPYFLLKQTASFPPFLFVKGNTALTALSSQRQAMVGSRYCTTYCEYWAHFAFATEL SLAGFTITSGLALGI 151  
 DQCC.IITLFDDEDYFLLKQISTAPPVLFVRGNVESLSLPQTAIVGSRDYSHYGEHWAGHSAELVKHQTAVTSGLATIGI 150  
 SENHHILTWDSPPYALLKEIADPPFLLYAKGELSALTQPSLAVGSRNASVTCNENARAFSREISRHGVSIVSGLALGI 152  
 PNHH.LIPADSEFYPPQLLATTDYPGALFVGEELHALHSFQLAVGSRASHSWYGERWCRIFCETLATRGTITSGLARGI 148  
 SSHHHILTALADALYPPLLKQTAVAPPPLFVKGASCLPQPQAVVGSRNASVDCLQHTRTFASDLVQHDLIVTSGLALGI 155  
 ANRRYIVTPHCPLYPRLLKEINSSPPVLFLEGIWEAVHDPAVAIVGSRNASVDCRQIARQFATEL AQSGLVVTSGLALGI 153

logo

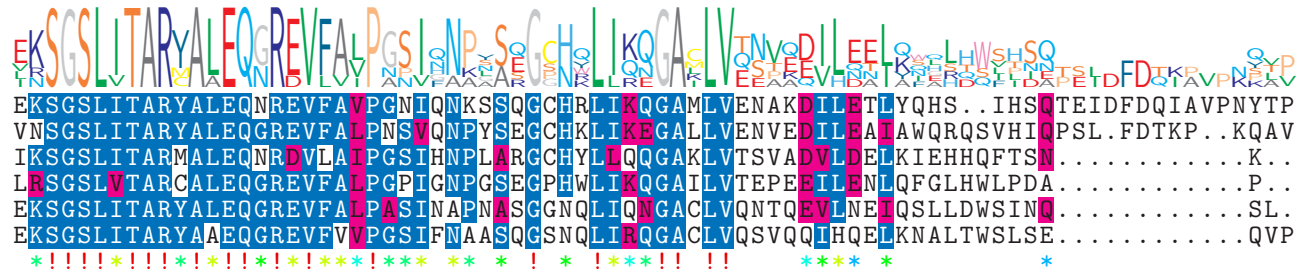
NTDB id 1361 HI 0985 AAC22646.1  
 NTDB id 1388 A4U84 RS04945 WP 062924099.1  
 NTDB id 1250 GC085 RS13065 WP 027219989.1  
 NTDB id 1152735 LQ135 RS13790 WP 000228517.1  
 NTDB id 1399 DSB67 RS15600 WP 010645755.1  
 NTDB id 1152 A1552VC RS00200 WP 000654772.1  
 consensus



DGHCHQAVVNIQQTIIVLGSGLAQVYPSKHQRLSAQTIENGALVSEFLPNQAPIAANFPRRNRRIISGLSVGLVVEAT 231  
 DGFCHQRAANENGITIAVLGSGLDQVYPARHKKLAEQIVETS GALVSEFFPSQPPIAENFPRRNRRIISGLSLGTLVEAT 230  
 DAHAHLCLEGGGKTIIVLGLCTCIDCTYPRRHLKLAEQITENGLLSEFPKSPPIAGHFPDNRRIISGLSLCTLVVEAA 231  
 DGVAHKALQVNGVSIAVLGNGLNTIHPRRHAPLAASLEGGALVSEFPLDVPPLAYNFPRRNRRIISGLSKGVLVVEAA 228  
 DGHAHDCALLAGCKTIAVLGSGLAQVYPARHRCGLAQRVAEN.GALVSEFRPDACPRAENFPRRNRRIISGLSLGLVVEAA 234  
 DGYAHDGALQAAGQTIIVLGSGLAQVYPKQHQCCLAERTIAG.GALVSEFAPHTPPKADHFPRRNRRIISGLSLGVVVEAA 232

logo

NTDB id 1361 HI 0985 AAC22646.1  
 NTDB id 1388 A4U84 RS04945 WP 062924099.1  
 NTDB id 1250 GC085 RS13065 WP 027219989.1  
 NTDB id 1152735 LQ135 RS13790 WP 000228517.1  
 NTDB id 1399 DSB67 RS15600 WP 010645755.1  
 NTDB id 1152 A1552VC RS00200 WP 000654772.1  
 consensus



EKSGSLITARYALEQQGREVFALPNSIENKSSQCCHRLIKQGAMLVENAKDILLETIQHS.IHSATEIDFDQIAVPNYTP 309  
 VNSGSLITARYALEQQGREVFALPNSIQNPYSECCHKLIKEGALLVENVEDILEATAWQRQSVHIQPSL.FDTKP..KQAV 307  
 IKSGSLITARMALQNRDVLAIYPSIHNPLARGCHYLQQGAKLVTSVADVLDLKLIEHHQFTSN.....K.. 297  
 LRSGLVTCALQEGREVFPPIGNPGECPHWLKKQGAIVTEPEBLENLQFGLHWLPDA.....P.. 294  
 EKSGSLITARYALEQQGREVFALPASINAPNASSGNQLIQNGACLVQNTQEVLENEIQSLLDWSINQ.....SL.. 301  
 EKSGSLITARYALEQQGREVFVPGSIFNAASQSGNQLIKQGACLVQVSVQQIHQELKNALTWSLSE.....QVP 300

logo

NTDB id 1361 HI 0985 AAC22646.1  
 NTDB id 1388 A4U84 RS04945 WP 062924099.1  
 NTDB id 1250 GC085 RS13065 WP 027219989.1  
 NTDB id 1152735 LQ135 RS13790 WP 000228517.1  
 NTDB id 1399 DSB67 RS15600 WP 010645755.1  
 NTDB id 1152 A1552VC RS00200 WP 000654772.1  
 consensus



PPDPR...RL.VEAPSHPKLYSRIQYTPVSDDLAEFNMISVVDLVQLDLLEIQLISENGLYKRIV..... 373  
 KSEPKFAKNLPLTACQQQLFEGISLEPISVDDLAKATDMAVETALIELLNLELLCVVKQVRGGYVIT..... 375  
 ...PIFSLASGK....ENLVKFLCFETTIDQIDRSYGYMEQVTSGLAELELEKCAVIAVPPGGYIRCEYER..... 361  
 .ENSFYSPDQETVALPFPELLANVGDEVTPVDVVAERAGQPVPEVVTQLELELACWIAAVPPGGYVRLRACHVRRNTNVF 373  
 ...DLFSAPIDEELPFPELLANVGNEATPVLDILASRTNTPVQEVMMQLELELSCHVAVSAGGYIRKGRG..... 369  
 YQATLFSAVQSDEELPFPELLANVGIEATPDLILASRTQIPVQDIIMMQLLELELLCHVAVPPGGYIRKGRG..... 371

logo

NTDB id 1361 HI 0985 AAC22646.1	✓	.	373
NTDB id 1388 A4U84 RS04945 WP 062924099.1		.	375
NTDB id 1250 GC085 RS13065 WP 027219989.1		.	361
NTDB id 1152735 LQ135 RS13790 WP 000228517.1	V	.	374
NTDB id 1399 DSB67 RS15600 WP 010645755.1		.	369
NTDB id 1152 A1552VC RS00200 WP 000654772.1		.	371

consensus

non conserved  
 similar  
 ≥ 50% conserved