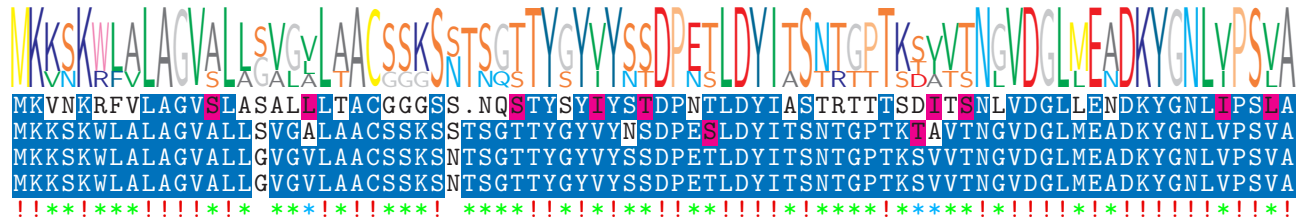


logo

NTDB id 1141723 DQL20 RS02250 WP 006594958.1  
NTDB id 475 HSISS4 RS07005 WP 021143809.1  
NTDB id 324 STU RS16140 WP 011226306.1  
NTDB id 292 STER RS06940 WP 011681419.1  
consensus



79  
80  
80  
80

logo

NTDB id 1141723 DQL20 RS02250 WP 006594958.1  
NTDB id 475 HSISS4 RS07005 WP 021143809.1  
NTDB id 324 STU RS16140 WP 011226306.1  
NTDB id 292 STER RS06940 WP 011681419.1  
consensus



159  
160  
160  
160

logo

NTDB id 1141723 DQL20 RS02250 WP 006594958.1  
NTDB id 475 HSISS4 RS07005 WP 021143809.1  
NTDB id 324 STU RS16140 WP 011226306.1  
NTDB id 292 STER RS06940 WP 011681419.1  
consensus



238  
240  
240  
240

logo

NTDB id 1141723 DQL20 RS02250 WP 006594958.1  
NTDB id 475 HSISS4 RS07005 WP 021143809.1  
NTDB id 324 STU RS16140 WP 011226306.1  
NTDB id 292 STER RS06940 WP 011681419.1  
consensus



318  
320  
320  
320

logo

NTDB id 1141723 DQL20 RS02250 WP 006594958.1  
NTDB id 475 HSISS4 RS07005 WP 021143809.1  
NTDB id 324 STU RS16140 WP 011226306.1  
NTDB id 292 STER RS06940 WP 011681419.1  
consensus



398  
400  
400  
400

logo

NTDB id 1141723 DQL20 RS02250 WP 006594958.1  
NTDB id 475 HSISS4 RS07005 WP 021143809.1  
NTDB id 324 STU RS16140 WP 011226306.1  
NTDB id 292 STER RS06940 WP 011681419.1  
consensus



478  
480  
480  
480

logo

NTDB id 1141723 DQL20 RS02250 WP 006594958.1  
 NTDB id 475 HSISS4 RS07005 WP 021143809.1  
 NTDB id 324 STU RS16140 WP 011226306.1  
 NTDB id 292 STER RS06940 WP 011681419.1  
 consensus



556  
559  
559  
559

logo

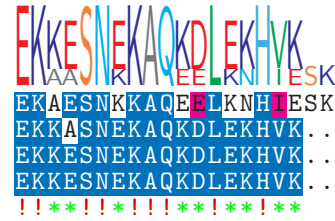
NTDB id 1141723 DQL20 RS02250 WP 006594958.1  
 NTDB id 475 HSISS4 RS07005 WP 021143809.1  
 NTDB id 324 STU RS16140 WP 011226306.1  
 NTDB id 292 STER RS06940 WP 011681419.1  
 consensus



634  
638  
639  
639

logo

NTDB id 1141723 DQL20 RS02250 WP 006594958.1  
 NTDB id 475 HSISS4 RS07005 WP 021143809.1  
 NTDB id 324 STU RS16140 WP 011226306.1  
 NTDB id 292 STER RS06940 WP 011681419.1  
 consensus



654  
656  
657  
657

non conserved  
 similar  
 ≥ 50% conserved