

logo

NTDB id 1140687 DQN40 RS02015 WP 003057826.1
NTDB id 476 HSISS4 RS06995 WP 013990225.1
NTDB id 293 STER RS06925 WP 011681416.1
NTDB id 325 STU RS16125 WP 002946410.1
consensus



80
80
80
80

logo

NTDB id 1140687 DQN40 RS02015 WP 003057826.1
NTDB id 476 HSISS4 RS06995 WP 013990225.1
NTDB id 293 STER RS06925 WP 011681416.1
NTDB id 325 STU RS16125 WP 002946410.1
consensus



160
160
160
160

logo

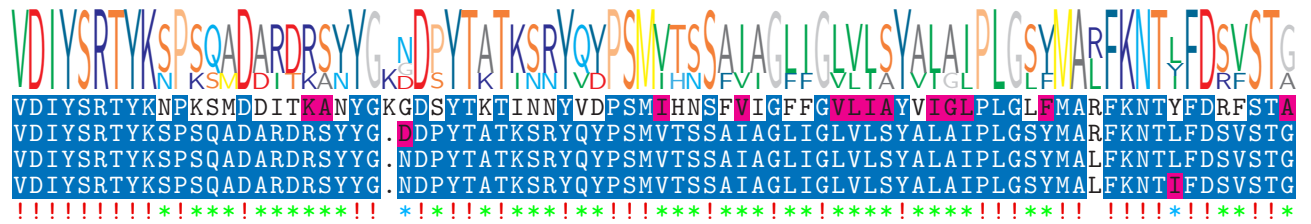
NTDB id 1140687 DQN40 RS02015 WP 003057826.1
NTDB id 476 HSISS4 RS06995 WP 013990225.1
NTDB id 293 STER RS06925 WP 011681416.1
NTDB id 325 STU RS16125 WP 002946410.1
consensus



240
239
239
239

logo

NTDB id 1140687 DQN40 RS02015 WP 003057826.1
NTDB id 476 HSISS4 RS06995 WP 013990225.1
NTDB id 293 STER RS06925 WP 011681416.1
NTDB id 325 STU RS16125 WP 002946410.1
consensus



320
318
318
318

logo

NTDB id 1140687 DQN40 RS02015 WP 003057826.1
NTDB id 476 HSISS4 RS06995 WP 013990225.1
NTDB id 293 STER RS06925 WP 011681416.1
NTDB id 325 STU RS16125 WP 002946410.1
consensus



400
398
398
398

logo

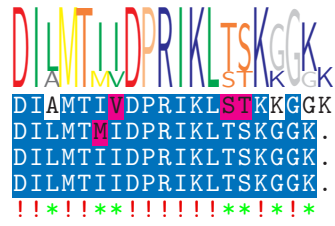
NTDB id 1140687 DQN40 RS02015 WP 003057826.1
NTDB id 476 HSISS4 RS06995 WP 013990225.1
NTDB id 293 STER RS06925 WP 011681416.1
NTDB id 325 STU RS16125 WP 002946410.1
consensus



480
478
478
478

logo

NTDB id 1140687 DQN40 RS02015 WP 003057826.1
NTDB id 476 HSISS4 RS06995 WP 013990225.1
NTDB id 293 STER RS06925 WP 011681416.1
NTDB id 325 STU RS16125 WP 002946410.1
consensus



500
497
497
497

non conserved
 similar
 ≥ 50% conserved