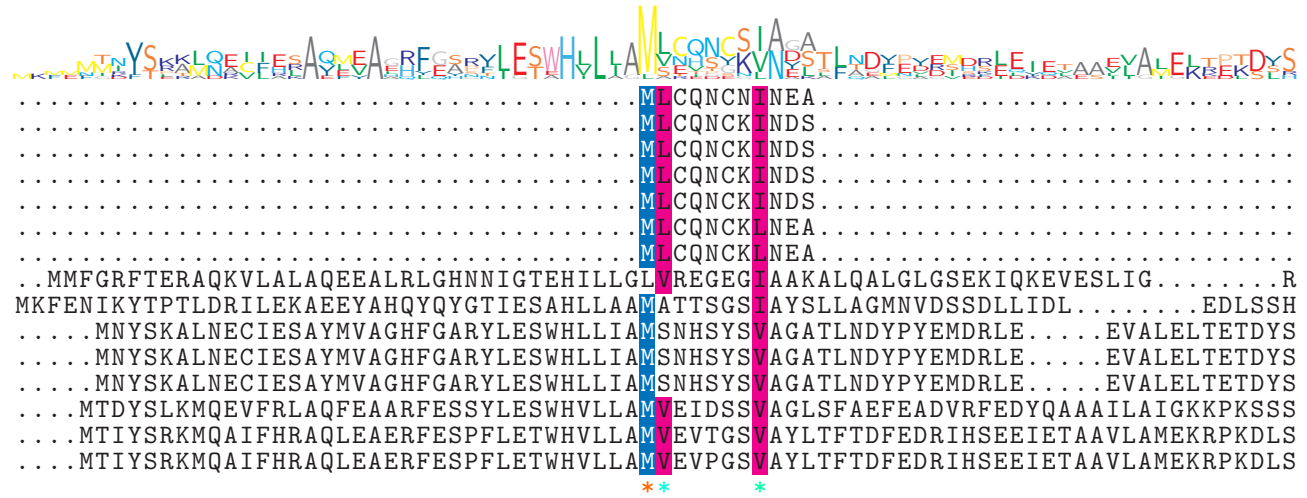


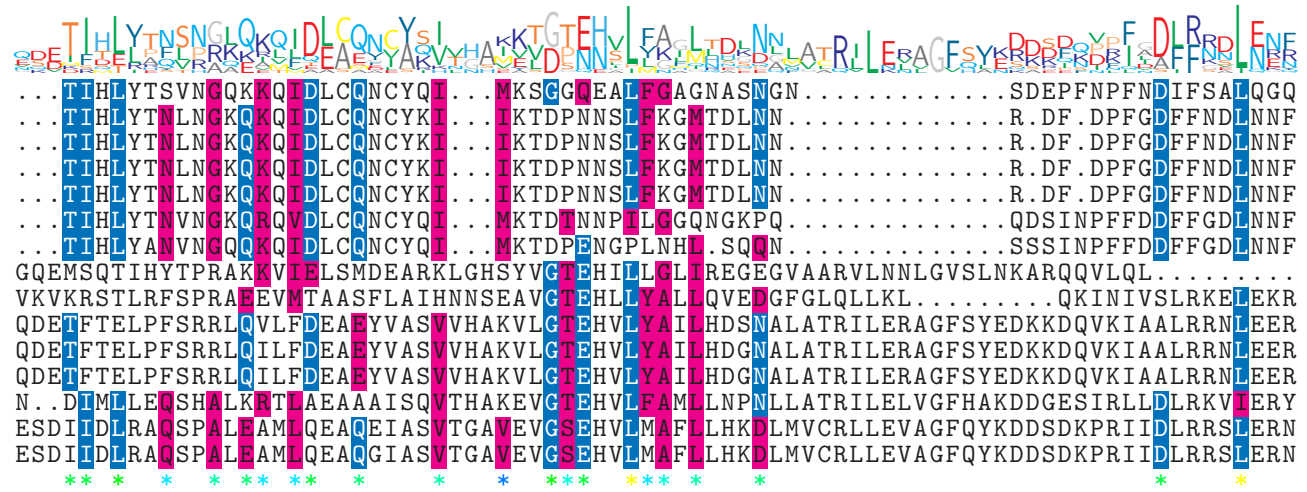
logo

NTDB id 601 KW2 RS02615 WP 021036805.1
 NTDB id 281 KZH43 RS03550 WP 000882517.1
 NTDB id 245 SPD RS03860 WP 000882517.1
 NTDB id 243 SPR RS03635 WP 000882517.1
 NTDB id 241 SP RS04015 WP 000882523.1
 NTDB id 1140172 DQM95 RS06855 WP 046391474.1
 NTDB id 378 SMU RS02690 WP 002263569.1
 NTDB id 85 BSU 00860 NP 387967.1
 NTDB id 610 V4T04 RS10165 WP 012897346.1
 NTDB id 287 SP RS11210 WP 001109712.1
 NTDB id 290 KZH43 RS10025 WP 001109677.1
 NTDB id 289 SPD RS10700 WP 001109677.1
 NTDB id 377 SMU RS09275 WP 002262344.1
 NTDB id 297 STER RS00545 WP 011680614.1
 NTDB id 329 STU RS10020 WP 011225298.1
 consensus



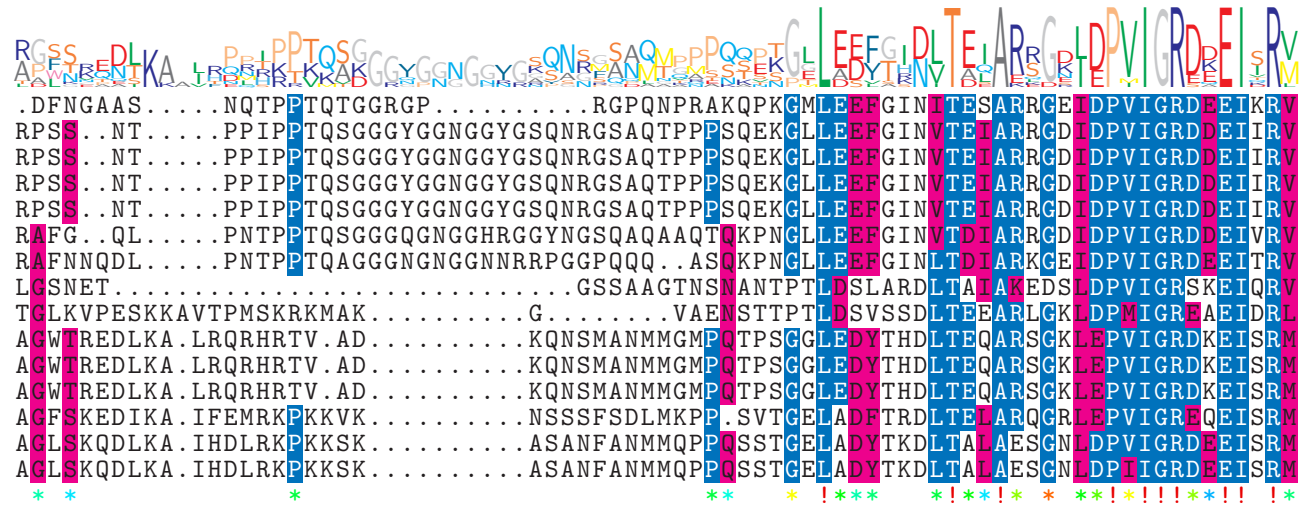
logo

NTDB id 601 KW2 RS02615 WP 021036805.1
 NTDB id 281 KZH43 RS03550 WP 000882517.1
 NTDB id 245 SPD RS03860 WP 000882517.1
 NTDB id 243 SPR RS03635 WP 000882517.1
 NTDB id 241 SP RS04015 WP 000882523.1
 NTDB id 1140172 DQM95 RS06855 WP 046391474.1
 NTDB id 378 SMU RS02690 WP 002263569.1
 NTDB id 85 BSU 00860 NP 387967.1
 NTDB id 610 V4T04 RS10165 WP 012897346.1
 NTDB id 287 SP RS11210 WP 001109712.1
 NTDB id 290 KZH43 RS10025 WP 001109677.1
 NTDB id 289 SPD RS10700 WP 001109677.1
 NTDB id 377 SMU RS09275 WP 002262344.1
 NTDB id 297 STER RS00545 WP 011680614.1
 NTDB id 329 STU RS10020 WP 011225298.1
 consensus



logo

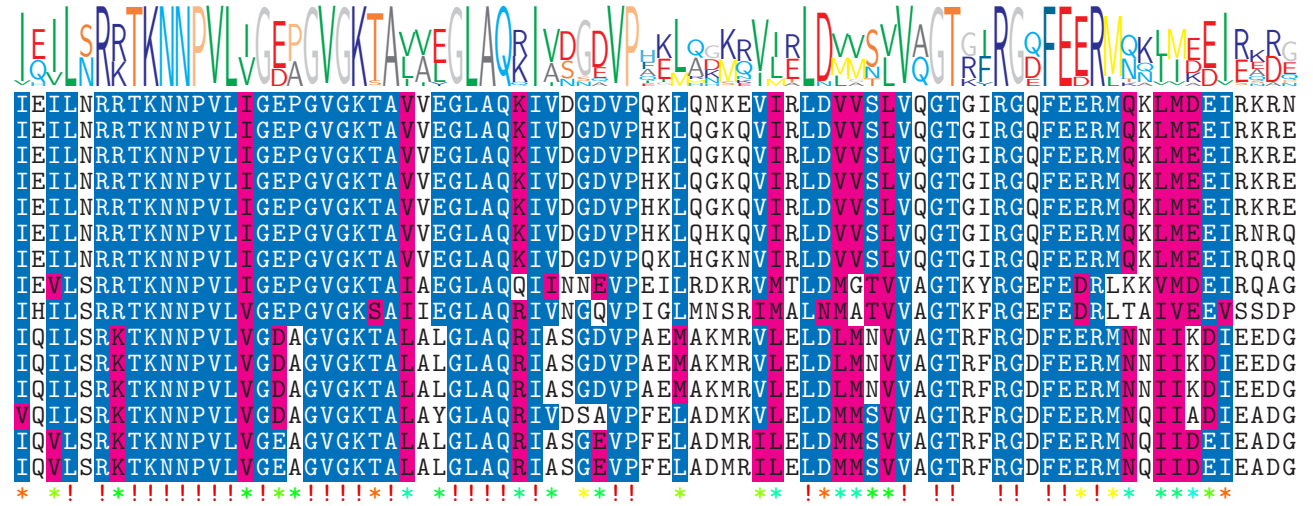
NTDB id 601 KW2 RS02615 WP 021036805.1
 NTDB id 281 KZH43 RS03550 WP 000882517.1
 NTDB id 245 SPD RS03860 WP 000882517.1
 NTDB id 243 SPR RS03635 WP 000882517.1
 NTDB id 241 SP RS04015 WP 000882523.1
 NTDB id 1140172 DQM95 RS06855 WP 046391474.1
 NTDB id 378 SMU RS02690 WP 002263569.1
 NTDB id 85 BSU 00860 NP 387967.1
 NTDB id 610 V4T04 RS10165 WP 012897346.1
 NTDB id 287 SP RS11210 WP 001109712.1
 NTDB id 290 KZH43 RS10025 WP 001109677.1
 NTDB id 289 SPD RS10700 WP 001109677.1
 NTDB id 377 SMU RS09275 WP 002262344.1
 NTDB id 297 STER RS00545 WP 011680614.1
 NTDB id 329 STU RS10020 WP 011225298.1
 consensus



136
142
142
142
142
144
143
192
205
218
218
218
222
225
225

logo

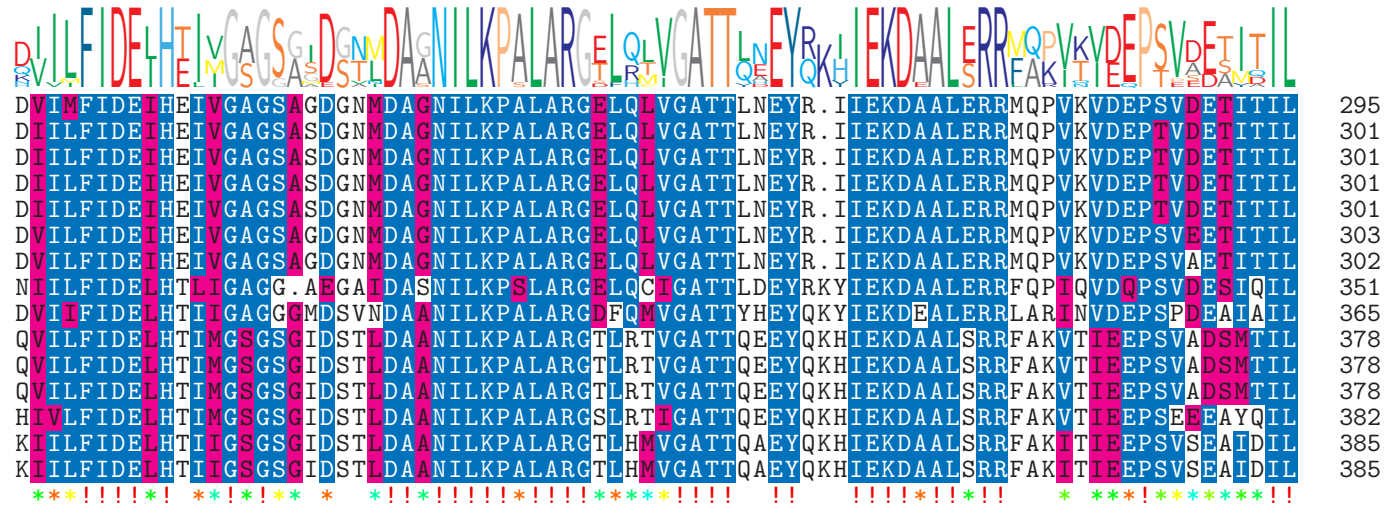
NTDB id 601 KW2 RS02615 WP 021036805.1
 NTDB id 281 KZH43 RS03550 WP 000882517.1
 NTDB id 245 SPD RS03860 WP 000882517.1
 NTDB id 243 SPR RS03635 WP 000882517.1
 NTDB id 241 SP RS04015 WP 000882523.1
 NTDB id 1140172 DQM95 RS06855 WP 046391474.1
 NTDB id 378 SMU RS02690 WP 002263569.1
 NTDB id 85 BSU 00860 NP 387967.1
 NTDB id 610 V4T04 RS10165 WP 012897346.1
 NTDB id 287 SP RS11210 WP 001109712.1
 NTDB id 290 KZH43 RS10025 WP 001109677.1
 NTDB id 289 SPD RS10700 WP 001109677.1
 NTDB id 377 SMU RS09275 WP 002262344.1
 NTDB id 297 STER RS00545 WP 011680614.1
 NTDB id 329 STU RS10020 WP 011225298.1
 consensus



216
222
222
222
222
224
223
272
285
298
298
298
302
305
305

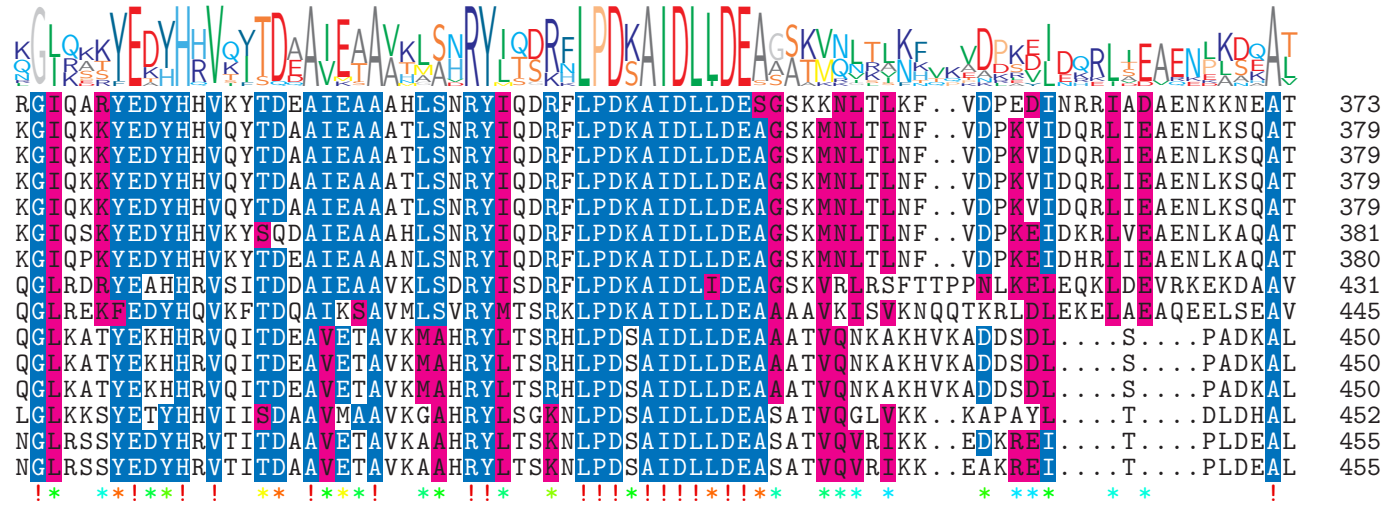
logo

NTDB id 601 KW2 RS02615 WP 021036805.1
 NTDB id 281 KZH43 RS03550 WP 000882517.1
 NTDB id 245 SPD RS03860 WP 000882517.1
 NTDB id 243 SPR RS03635 WP 000882517.1
 NTDB id 241 SP RS04015 WP 000882523.1
 NTDB id 1140172 DQM95 RS06855 WP 046391474.1
 NTDB id 378 SMU RS02690 WP 002263569.1
 NTDB id 85 BSU 00860 NP 387967.1
 NTDB id 610 V4T04 RS10165 WP 012897346.1
 NTDB id 287 SP RS11210 WP 001109712.1
 NTDB id 290 KZH43 RS10025 WP 001109677.1
 NTDB id 289 SPD RS10700 WP 001109677.1
 NTDB id 377 SMU RS09275 WP 002262344.1
 NTDB id 297 STER RS00545 WP 011680614.1
 NTDB id 329 STU RS10020 WP 011225298.1
 consensus



logo

NTDB id 601 KW2 RS02615 WP 021036805.1
 NTDB id 281 KZH43 RS03550 WP 000882517.1
 NTDB id 245 SPD RS03860 WP 000882517.1
 NTDB id 243 SPR RS03635 WP 000882517.1
 NTDB id 241 SP RS04015 WP 000882523.1
 NTDB id 1140172 DQM95 RS06855 WP 046391474.1
 NTDB id 378 SMU RS02690 WP 002263569.1
 NTDB id 85 BSU 00860 NP 387967.1
 NTDB id 610 V4T04 RS10165 WP 012897346.1
 NTDB id 287 SP RS11210 WP 001109712.1
 NTDB id 290 KZH43 RS10025 WP 001109677.1
 NTDB id 289 SPD RS10700 WP 001109677.1
 NTDB id 377 SMU RS09275 WP 002262344.1
 NTDB id 297 STER RS00545 WP 011680614.1
 NTDB id 329 STU RS10020 WP 011225298.1
 consensus



logo

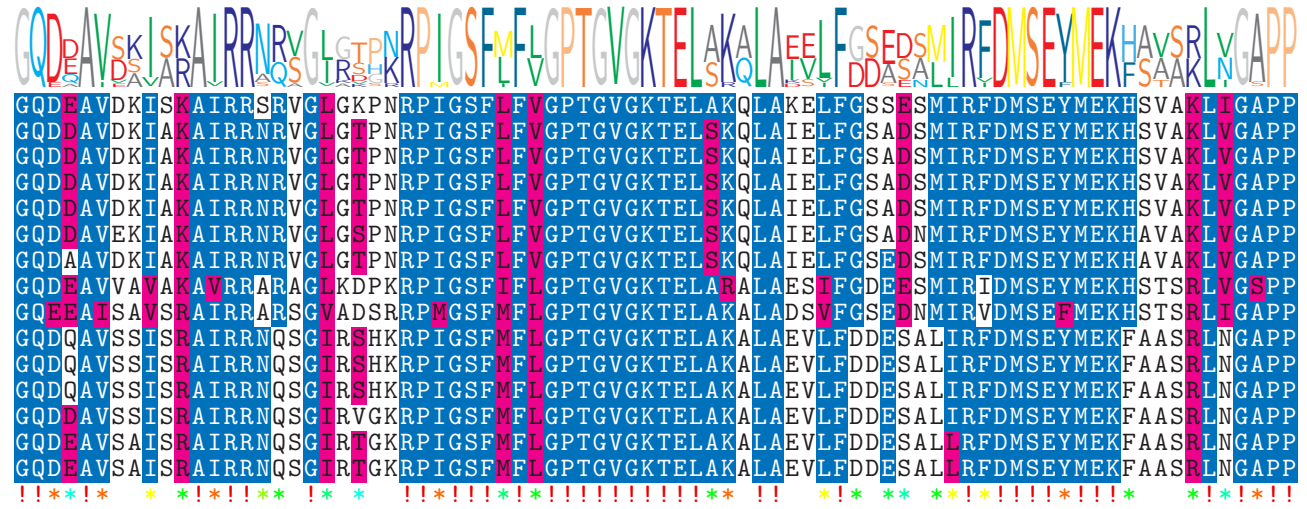
NTDB id 601 KW2 RS02615 WP 021036805.1
 NTDB id 281 KZH43 RS03550 WP 000882517.1
 NTDB id 245 SPD RS03860 WP 000882517.1
 NTDB id 243 SPR RS03635 WP 000882517.1
 NTDB id 241 SP RS04015 WP 000882523.1
 NTDB id 1140172 DQM95 RS06855 WP 046391474.1
 NTDB id 378 SMU RS02690 WP 002263569.1
 NTDB id 85 BSU 00860 NP 387967.1
 NTDB id 610 V4T04 RS10165 WP 012897346.1
 NTDB id 287 SP RS11210 WP 001109712.1
 NTDB id 290 KZH43 RS10025 WP 001109677.1
 NTDB id 289 SPD RS10700 WP 001109677.1
 NTDB id 377 SMU RS09275 WP 002262344.1
 NTDB id 297 STER RS00545 WP 011680614.1
 NTDB id 329 STU RS10020 WP 011225298.1
 consensus



447
453
453
453
453
455
454
511
520
515
515
515
518
521
521

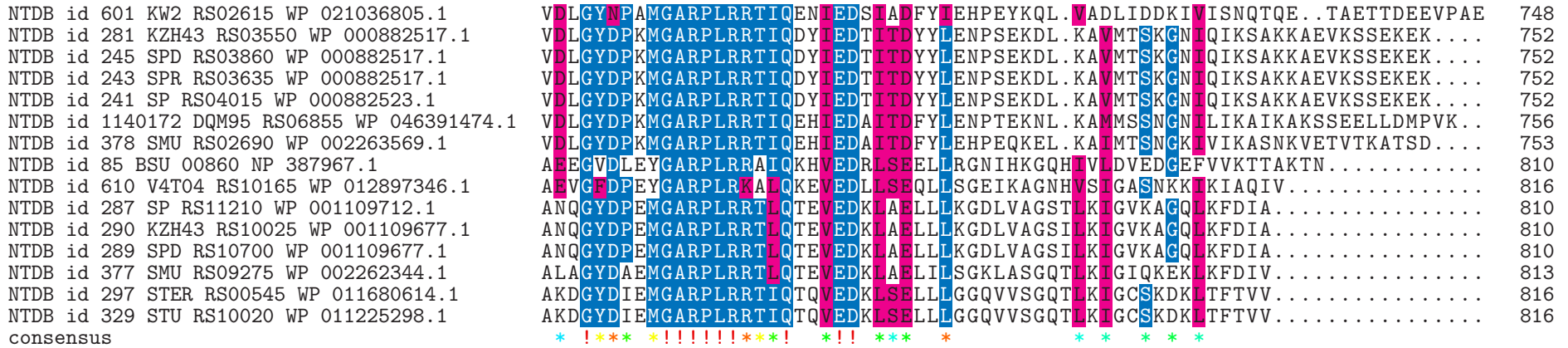
logo

NTDB id 601 KW2 RS02615 WP 021036805.1
 NTDB id 281 KZH43 RS03550 WP 000882517.1
 NTDB id 245 SPD RS03860 WP 000882517.1
 NTDB id 243 SPR RS03635 WP 000882517.1
 NTDB id 241 SP RS04015 WP 000882523.1
 NTDB id 1140172 DQM95 RS06855 WP 046391474.1
 NTDB id 378 SMU RS02690 WP 002263569.1
 NTDB id 85 BSU 00860 NP 387967.1
 NTDB id 610 V4T04 RS10165 WP 012897346.1
 NTDB id 287 SP RS11210 WP 001109712.1
 NTDB id 290 KZH43 RS10025 WP 001109677.1
 NTDB id 289 SPD RS10700 WP 001109677.1
 NTDB id 377 SMU RS09275 WP 002262344.1
 NTDB id 297 STER RS00545 WP 011680614.1
 NTDB id 329 STU RS10020 WP 011225298.1
 consensus



527
533
533
533
533
535
534
591
600
595
595
595
598
601
601

logo



 non conserved
 similar
 ≥ 50% conserved