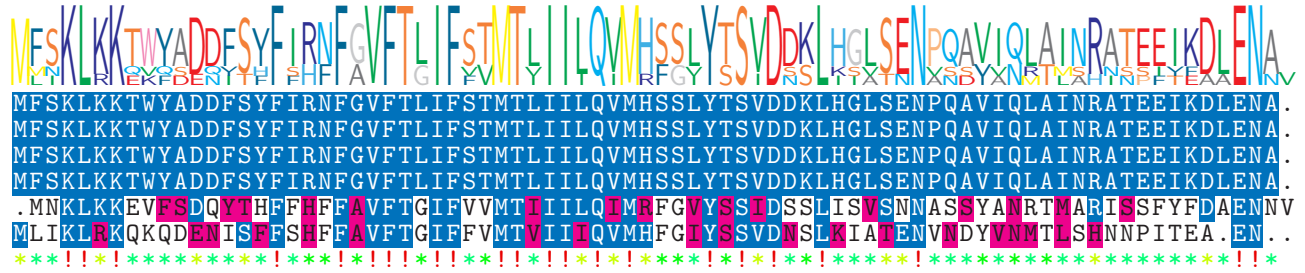


logo

NTDB id 259 KZH43 RS03480 WP 000491790.1  
 NTDB id 218 SPD RS03780 WP 000491790.1  
 NTDB id 184 SPR RS03565 WP 000491790.1  
 NTDB id 148 SP RS03910 WP 000491790.1  
 NTDB id 1138614 DQM58 RS05710 WP 014612303.1  
 NTDB id 363 SMU RS05195 WP 002262215.1  
 consensus



79  
79  
79  
79  
79  
77

logo

NTDB id 259 KZH43 RS03480 WP 000491790.1  
 NTDB id 218 SPD RS03780 WP 000491790.1  
 NTDB id 184 SPR RS03565 WP 000491790.1  
 NTDB id 148 SP RS03910 WP 000491790.1  
 NTDB id 1138614 DQM58 RS05710 WP 014612303.1  
 NTDB id 363 SMU RS05195 WP 002262215.1  
 consensus



156  
156  
156  
156  
159  
154

logo

NTDB id 259 KZH43 RS03480 WP 000491790.1  
 NTDB id 218 SPD RS03780 WP 000491790.1  
 NTDB id 184 SPR RS03565 WP 000491790.1  
 NTDB id 148 SP RS03910 WP 000491790.1  
 NTDB id 1138614 DQM58 RS05710 WP 014612303.1  
 NTDB id 363 SMU RS05195 WP 002262215.1  
 consensus



236  
236  
236  
236  
238  
233

logo

NTDB id 259 KZH43 RS03480 WP 000491790.1  
 NTDB id 218 SPD RS03780 WP 000491790.1  
 NTDB id 184 SPR RS03565 WP 000491790.1  
 NTDB id 148 SP RS03910 WP 000491790.1  
 NTDB id 1138614 DQM58 RS05710 WP 014612303.1  
 NTDB id 363 SMU RS05195 WP 002262215.1  
 consensus



316  
316  
316  
316  
318  
313

logo

NTDB id 259 KZH43 RS03480 WP 000491790.1  
 NTDB id 218 SPD RS03780 WP 000491790.1  
 NTDB id 184 SPR RS03565 WP 000491790.1  
 NTDB id 148 SP RS03910 WP 000491790.1  
 NTDB id 1138614 DQM58 RS05710 WP 014612303.1  
 NTDB id 363 SMU RS05195 WP 002262215.1  
 consensus



396  
396  
396  
396  
398  
393

logo

NTDB id 259 KZH43 RS03480 WP 000491790.1  
 NTDB id 218 SPD RS03780 WP 000491790.1  
 NTDB id 184 SPR RS03565 WP 000491790.1  
 NTDB id 148 SP RS03910 WP 000491790.1  
 NTDB id 1138614 DQM58 RS05710 WP 014612303.1  
 NTDB id 363 SMU RS05195 WP 002262215.1  
 consensus



444  
 444  
 444  
 444  
 436  
 435

non conserved  
 similar  
 ≥ 50% conserved