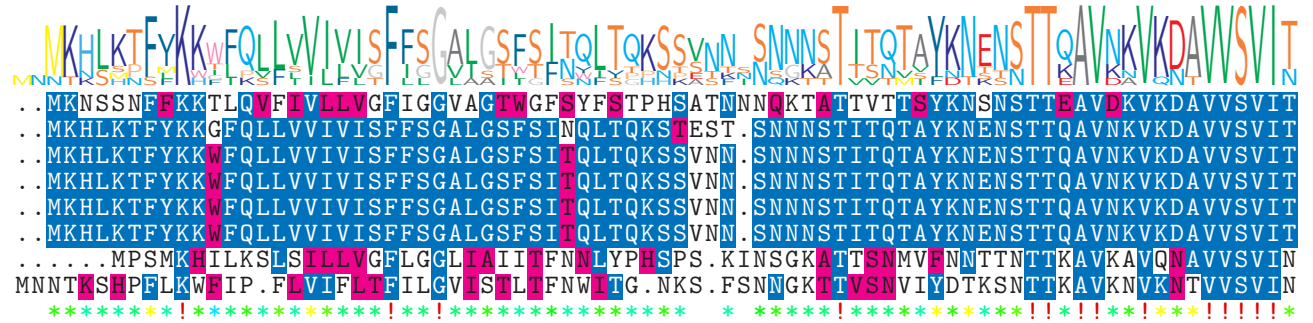


logo

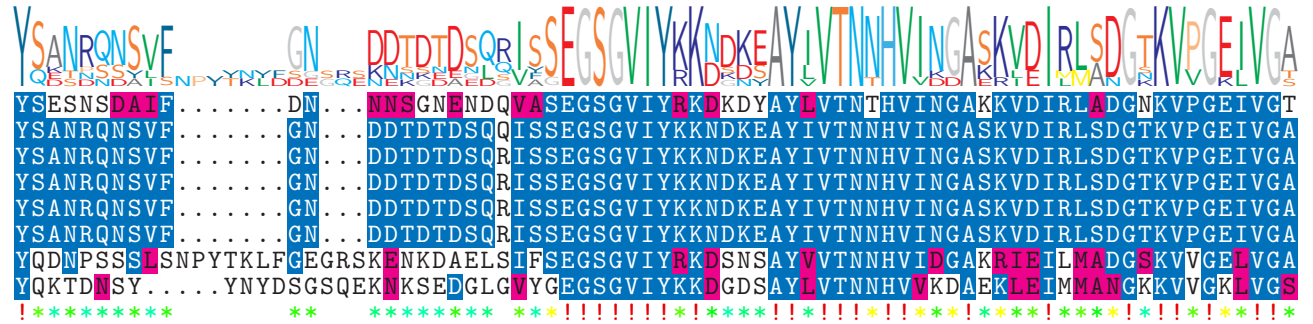
NTDB id 425 SGO RS10525 WP 012131081.1
 NTDB id 539 SM12261 RS09395 WP 000681587.1
 NTDB id 256 KZH43 RS10270 WP 000681597.1
 NTDB id 215 SPD RS10945 WP 000681597.1
 NTDB id 181 SPR RS10425 WP 000681597.1
 NTDB id 145 SP RS11450 WP 000681597.1
 NTDB id 1137105 DQL28 RS09345 WP 111676915.1
 NTDB id 381 SMU RS09890 WP 002262650.1
 consensus



78
77
77
77
77
77
73
77

logo

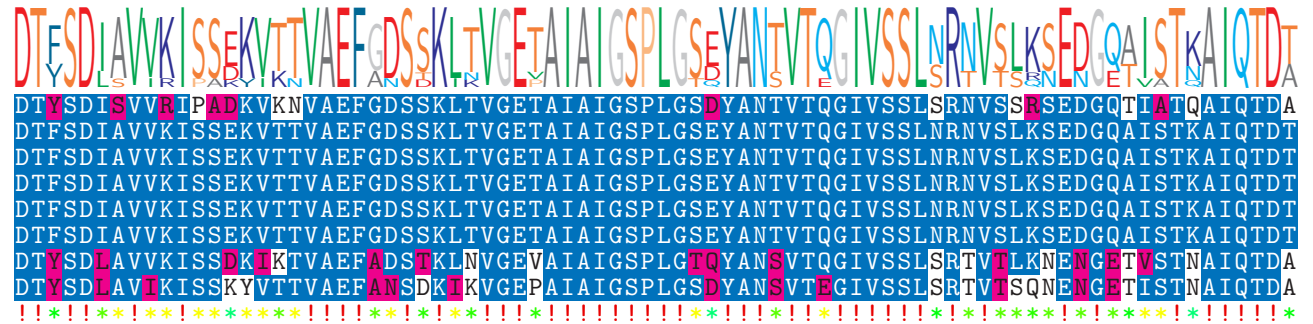
NTDB id 425 SGO RS10525 WP 012131081.1
 NTDB id 539 SM12261 RS09395 WP 000681587.1
 NTDB id 256 KZH43 RS10270 WP 000681597.1
 NTDB id 215 SPD RS10945 WP 000681597.1
 NTDB id 181 SPR RS10425 WP 000681597.1
 NTDB id 145 SP RS11450 WP 000681597.1
 NTDB id 1137105 DQL28 RS09345 WP 111676915.1
 NTDB id 381 SMU RS09890 WP 002262650.1
 consensus



148
147
147
147
147
147
153
152

logo

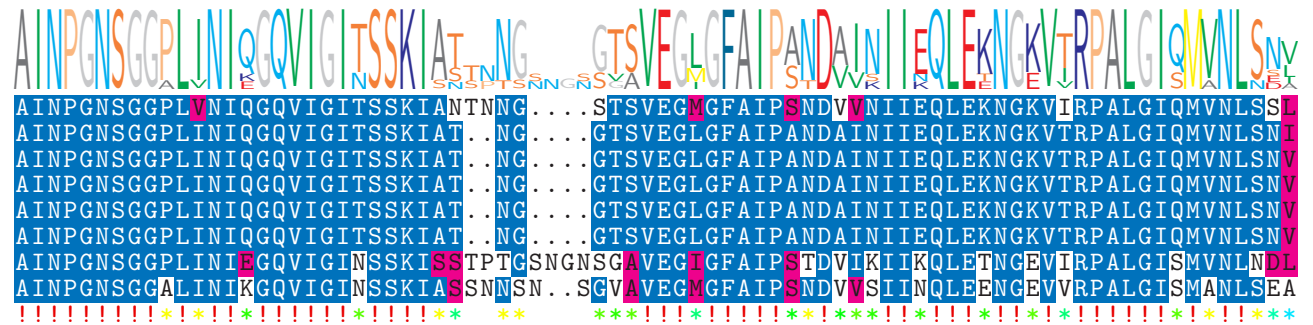
NTDB id 425 SGO RS10525 WP 012131081.1
 NTDB id 539 SM12261 RS09395 WP 000681587.1
 NTDB id 256 KZH43 RS10270 WP 000681597.1
 NTDB id 215 SPD RS10945 WP 000681597.1
 NTDB id 181 SPR RS10425 WP 000681597.1
 NTDB id 145 SP RS11450 WP 000681597.1
 NTDB id 1137105 DQL28 RS09345 WP 111676915.1
 NTDB id 381 SMU RS09890 WP 002262650.1
 consensus



228
227
227
227
227
227
233
232

logo

NTDB id 425 SGO RS10525 WP 012131081.1
 NTDB id 539 SM12261 RS09395 WP 000681587.1
 NTDB id 256 KZH43 RS10270 WP 000681597.1
 NTDB id 215 SPD RS10945 WP 000681597.1
 NTDB id 181 SPR RS10425 WP 000681597.1
 NTDB id 145 SP RS11450 WP 000681597.1
 NTDB id 1137105 DQL28 RS09345 WP 111676915.1
 NTDB id 381 SMU RS09890 WP 002262650.1
 consensus



304
301
301
301
301
301
313
310

logo

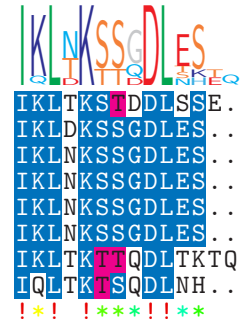
NTDB id 425 SGO RS10525 WP 012131081.1
 NTDB id 539 SM12261 RS09395 WP 000681587.1
 NTDB id 256 KZH43 RS10270 WP 000681597.1
 NTDB id 215 SPD RS10945 WP 000681597.1
 NTDB id 181 SPR RS10425 WP 000681597.1
 NTDB id 145 SP RS11450 WP 000681597.1
 NTDB id 1137105 DQL28 RS09345 WP 111676915.1
 NTDB id 381 SMU RS09890 WP 002262650.1
 consensus



384
381
381
381
381
381
393
390

logo

NTDB id 425 SGO RS10525 WP 012131081.1
 NTDB id 539 SM12261 RS09395 WP 000681587.1
 NTDB id 256 KZH43 RS10270 WP 000681597.1
 NTDB id 215 SPD RS10945 WP 000681597.1
 NTDB id 181 SPR RS10425 WP 000681597.1
 NTDB id 145 SP RS11450 WP 000681597.1
 NTDB id 1137105 DQL28 RS09345 WP 111676915.1
 NTDB id 381 SMU RS09890 WP 002262650.1
 consensus



397
393
393
393
393
407
402

non conserved
 similar
 ≥ 50% conserved