

logo

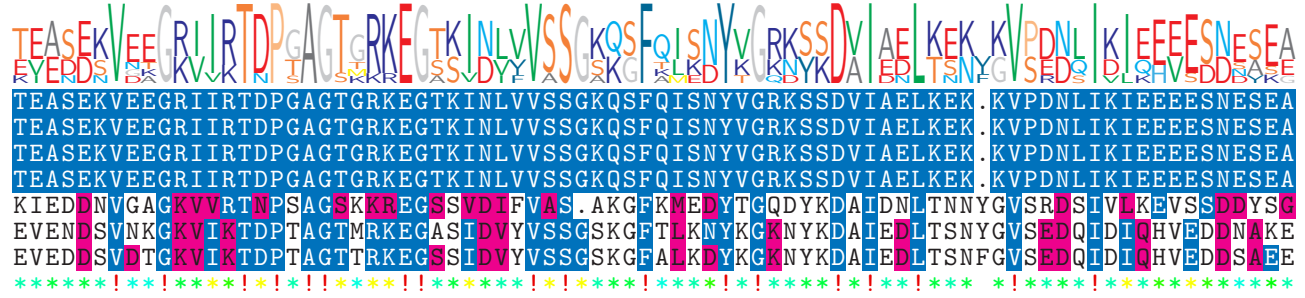
NTDB id 146 SP RS08570 WP 000614538.1
 NTDB id 216 SPD RS08205 WP 000614552.1
 NTDB id 182 SPR RS07820 WP 000614552.1
 NTDB id 257 KZH43 RS07655 WP 220041236.1
 NTDB id 384 SMU RS02325 WP 002263039.1
 NTDB id 1131590 H1W91 RS06860 WP 011226292.1
 NTDB id 467 HSISS4 RS06915 WP 021143821.1
 consensus



398
398
398
398
398
395
398

logo

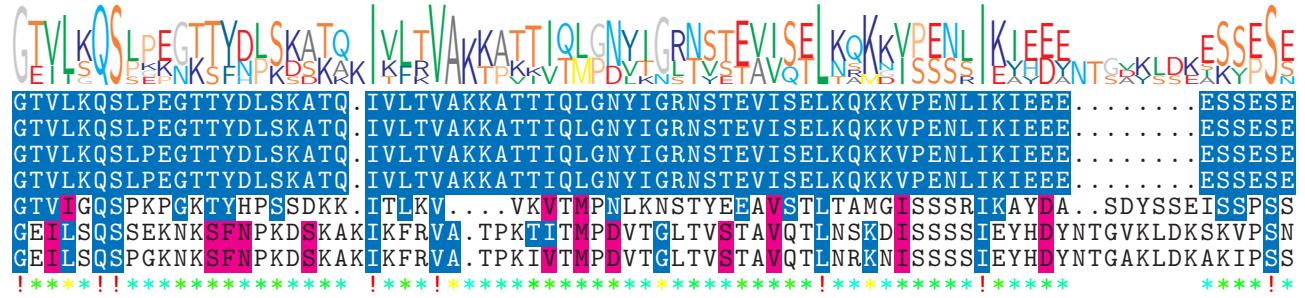
NTDB id 146 SP RS08570 WP 000614538.1
 NTDB id 216 SPD RS08205 WP 000614552.1
 NTDB id 182 SPR RS07820 WP 000614552.1
 NTDB id 257 KZH43 RS07655 WP 220041236.1
 NTDB id 384 SMU RS02325 WP 002263039.1
 NTDB id 1131590 H1W91 RS06860 WP 011226292.1
 NTDB id 467 HSISS4 RS06915 WP 021143821.1
 consensus



477
477
477
477
477
475
478

logo

NTDB id 146 SP RS08570 WP 000614538.1
 NTDB id 216 SPD RS08205 WP 000614552.1
 NTDB id 182 SPR RS07820 WP 000614552.1
 NTDB id 257 KZH43 RS07655 WP 220041236.1
 NTDB id 384 SMU RS02325 WP 002263039.1
 NTDB id 1131590 H1W91 RS06860 WP 011226292.1
 NTDB id 467 HSISS4 RS06915 WP 021143821.1
 consensus



548
548
548
548
550
554
557

logo

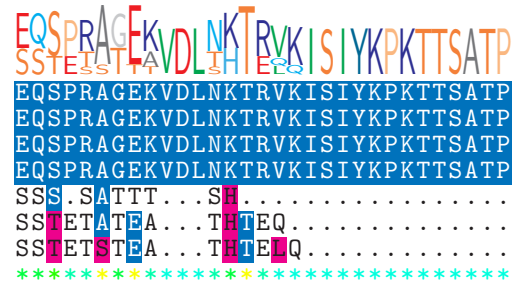
NTDB id 146 SP RS08570 WP 000614538.1
 NTDB id 216 SPD RS08205 WP 000614552.1
 NTDB id 182 SPR RS07820 WP 000614552.1
 NTDB id 257 KZH43 RS07655 WP 220041236.1
 NTDB id 384 SMU RS02325 WP 002263039.1
 NTDB id 1131590 H1W91 RS06860 WP 011226292.1
 NTDB id 467 HSISS4 RS06915 WP 021143821.1
 consensus



628
628
628
628
628
606
609
609

logo

NTDB id 146 SP RS08570 WP 000614538.1
 NTDB id 216 SPD RS08205 WP 000614552.1
 NTDB id 182 SPR RS07820 WP 000614552.1
 NTDB id 257 KZH43 RS07655 WP 220041236.1
 NTDB id 384 SMU RS02325 WP 002263039.1
 NTDB id 1131590 H1W91 RS06860 WP 011226292.1
 NTDB id 467 HSISS4 RS06915 WP 021143821.1
 consensus



659
 659
 659
 659
 616
 623
 624

non conserved
 similar
 ≥ 50% conserved