

logo

NTDB id 384 SMU RS02325 WP 002263039.1
 NTDB id 467 HSISS4 RS06915 WP 021143821.1
 NTDB id 1127479 FGL12 RS02960 WP 012000094.1
 NTDB id 146 SP RS08570 WP 000614538.1
 NTDB id 216 SPD RS08205 WP 000614552.1
 NTDB id 182 SPR RS07820 WP 000614552.1
 NTDB id 257 KZH43 RS07655 WP 220041236.1
 consensus



80
80
80
80
80
80
80

logo

NTDB id 384 SMU RS02325 WP 002263039.1
 NTDB id 467 HSISS4 RS06915 WP 021143821.1
 NTDB id 1127479 FGL12 RS02960 WP 012000094.1
 NTDB id 146 SP RS08570 WP 000614538.1
 NTDB id 216 SPD RS08205 WP 000614552.1
 NTDB id 182 SPR RS07820 WP 000614552.1
 NTDB id 257 KZH43 RS07655 WP 220041236.1
 consensus



160
160
160
160
160
160
160

logo

NTDB id 384 SMU RS02325 WP 002263039.1
 NTDB id 467 HSISS4 RS06915 WP 021143821.1
 NTDB id 1127479 FGL12 RS02960 WP 012000094.1
 NTDB id 146 SP RS08570 WP 000614538.1
 NTDB id 216 SPD RS08205 WP 000614552.1
 NTDB id 182 SPR RS07820 WP 000614552.1
 NTDB id 257 KZH43 RS07655 WP 220041236.1
 consensus



240
240
240
240
240
240
240

logo

NTDB id 384 SMU RS02325 WP 002263039.1
 NTDB id 467 HSISS4 RS06915 WP 021143821.1
 NTDB id 1127479 FGL12 RS02960 WP 012000094.1
 NTDB id 146 SP RS08570 WP 000614538.1
 NTDB id 216 SPD RS08205 WP 000614552.1
 NTDB id 182 SPR RS07820 WP 000614552.1
 NTDB id 257 KZH43 RS07655 WP 220041236.1
 consensus



315
315
313
320
320
320
320

logo

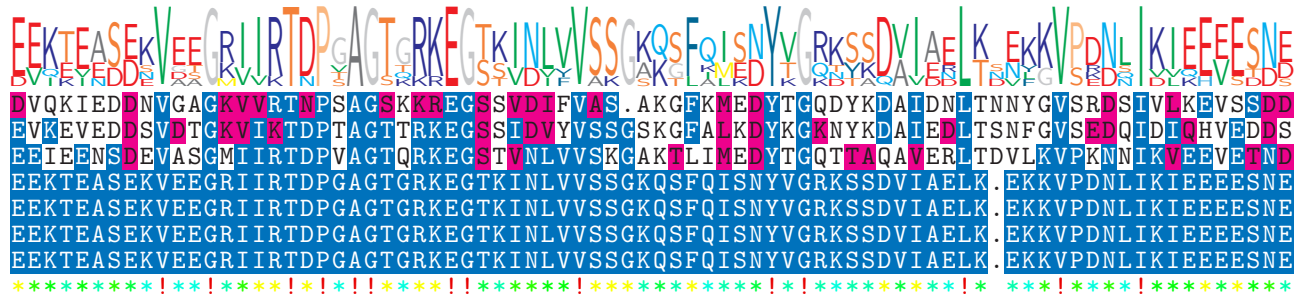
NTDB id 384 SMU RS02325 WP 002263039.1
 NTDB id 467 HSISS4 RS06915 WP 021143821.1
 NTDB id 1127479 FGL12 RS02960 WP 012000094.1
 NTDB id 146 SP RS08570 WP 000614538.1
 NTDB id 216 SPD RS08205 WP 000614552.1
 NTDB id 182 SPR RS07820 WP 000614552.1
 NTDB id 257 KZH43 RS07655 WP 220041236.1
 consensus



395
395
391
395
395
395
395

logo

NTDB id 384 SMU RS02325 WP 002263039.1
 NTDB id 467 HSISS4 RS06915 WP 021143821.1
 NTDB id 1127479 FGL12 RS02960 WP 012000094.1
 NTDB id 146 SP RS08570 WP 000614538.1
 NTDB id 216 SPD RS08205 WP 000614552.1
 NTDB id 182 SPR RS07820 WP 000614552.1
 NTDB id 257 KZH43 RS07655 WP 220041236.1
 consensus



474
475
471
474
474
474
474

logo

NTDB id 384 SMU RS02325 WP 002263039.1
 NTDB id 467 HSISS4 RS06915 WP 021143821.1
 NTDB id 1127479 FGL12 RS02960 WP 012000094.1
 NTDB id 146 SP RS08570 WP 000614538.1
 NTDB id 216 SPD RS08205 WP 000614552.1
 NTDB id 182 SPR RS07820 WP 000614552.1
 NTDB id 257 KZH43 RS07655 WP 220041236.1
 consensus



526
531
516
553
553
553
553

logo

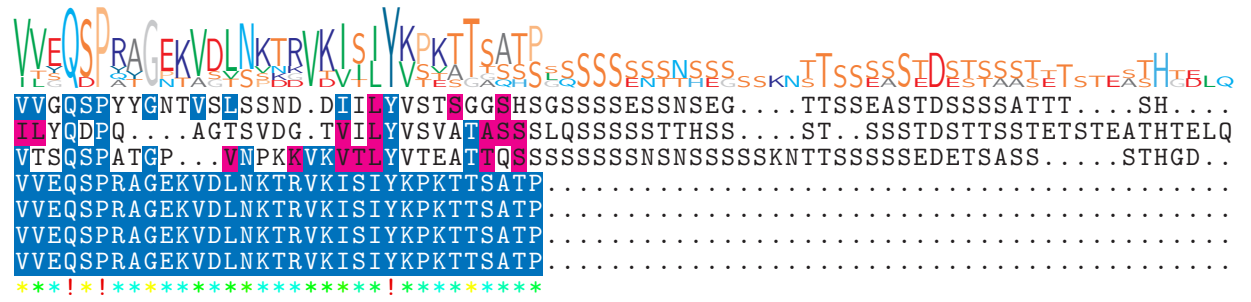
NTDB id 384 SMU RS02325 WP 002263039.1
 NTDB id 467 HSISS4 RS06915 WP 021143821.1
 NTDB id 1127479 FGL12 RS02960 WP 012000094.1
 NTDB id 146 SP RS08570 WP 000614538.1
 NTDB id 216 SPD RS08205 WP 000614552.1
 NTDB id 182 SPR RS07820 WP 000614552.1
 NTDB id 257 KZH43 RS07655 WP 220041236.1
 consensus



553
559
551
626
626
626
626

logo

NTDB id 384 SMU RS02325 WP 002263039.1
 NTDB id 467 HSISS4 RS06915 WP 021143821.1
 NTDB id 1127479 FGL12 RS02960 WP 012000094.1
 NTDB id 146 SP RS08570 WP 000614538.1
 NTDB id 216 SPD RS08205 WP 000614552.1
 NTDB id 182 SPR RS07820 WP 000614552.1
 NTDB id 257 KZH43 RS07655 WP 220041236.1
 consensus



616
 624
 617
 659
 659
 659
 659

non conserved
 similar
 ≥ 50% conserved