

logo

NTDB id 384 SMU RS02325 WP 002263039.1  
 NTDB id 467 HSISS4 RS06915 WP 021143821.1  
 NTDB id 1120346 EL092 RS03025 WP 012000094.1  
 NTDB id 146 SP RS08570 WP 000614538.1  
 NTDB id 216 SPD RS08205 WP 000614552.1  
 NTDB id 182 SPR RS07820 WP 000614552.1  
 NTDB id 257 KZH43 RS07655 WP 220041236.1  
 consensus



80  
80  
80  
80  
80  
80  
80

logo

NTDB id 384 SMU RS02325 WP 002263039.1  
 NTDB id 467 HSISS4 RS06915 WP 021143821.1  
 NTDB id 1120346 EL092 RS03025 WP 012000094.1  
 NTDB id 146 SP RS08570 WP 000614538.1  
 NTDB id 216 SPD RS08205 WP 000614552.1  
 NTDB id 182 SPR RS07820 WP 000614552.1  
 NTDB id 257 KZH43 RS07655 WP 220041236.1  
 consensus



160  
160  
160  
160  
160  
160  
160

logo

NTDB id 384 SMU RS02325 WP 002263039.1  
 NTDB id 467 HSISS4 RS06915 WP 021143821.1  
 NTDB id 1120346 EL092 RS03025 WP 012000094.1  
 NTDB id 146 SP RS08570 WP 000614538.1  
 NTDB id 216 SPD RS08205 WP 000614552.1  
 NTDB id 182 SPR RS07820 WP 000614552.1  
 NTDB id 257 KZH43 RS07655 WP 220041236.1  
 consensus



240  
240  
240  
240  
240  
240  
240

logo

NTDB id 384 SMU RS02325 WP 002263039.1  
 NTDB id 467 HSISS4 RS06915 WP 021143821.1  
 NTDB id 1120346 EL092 RS03025 WP 012000094.1  
 NTDB id 146 SP RS08570 WP 000614538.1  
 NTDB id 216 SPD RS08205 WP 000614552.1  
 NTDB id 182 SPR RS07820 WP 000614552.1  
 NTDB id 257 KZH43 RS07655 WP 220041236.1  
 consensus



315  
315  
313  
320  
320  
320  
320

logo

NTDB id 384 SMU RS02325 WP 002263039.1  
 NTDB id 467 HSISS4 RS06915 WP 021143821.1  
 NTDB id 1120346 EL092 RS03025 WP 012000094.1  
 NTDB id 146 SP RS08570 WP 000614538.1  
 NTDB id 216 SPD RS08205 WP 000614552.1  
 NTDB id 182 SPR RS07820 WP 000614552.1  
 NTDB id 257 KZH43 RS07655 WP 220041236.1  
 consensus



395  
395  
391  
395  
395  
395  
395

logo

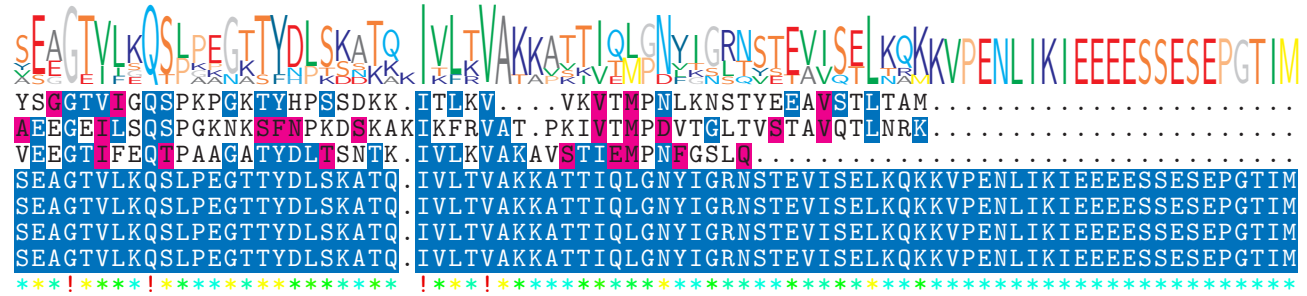
NTDB id 384 SMU RS02325 WP 002263039.1  
 NTDB id 467 HSISS4 RS06915 WP 021143821.1  
 NTDB id 1120346 EL092 RS03025 WP 012000094.1  
 NTDB id 146 SP RS08570 WP 000614538.1  
 NTDB id 216 SPD RS08205 WP 000614552.1  
 NTDB id 182 SPR RS07820 WP 000614552.1  
 NTDB id 257 KZH43 RS07655 WP 220041236.1  
 consensus



474  
475  
471  
474  
474  
474  
474

logo

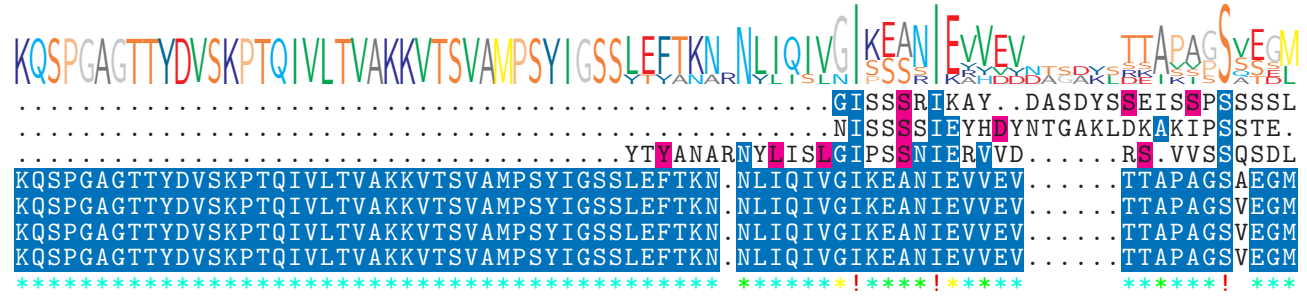
NTDB id 384 SMU RS02325 WP 002263039.1  
 NTDB id 467 HSISS4 RS06915 WP 021143821.1  
 NTDB id 1120346 EL092 RS03025 WP 012000094.1  
 NTDB id 146 SP RS08570 WP 000614538.1  
 NTDB id 216 SPD RS08205 WP 000614552.1  
 NTDB id 182 SPR RS07820 WP 000614552.1  
 NTDB id 257 KZH43 RS07655 WP 220041236.1  
 consensus



526  
531  
516  
553  
553  
553  
553

logo

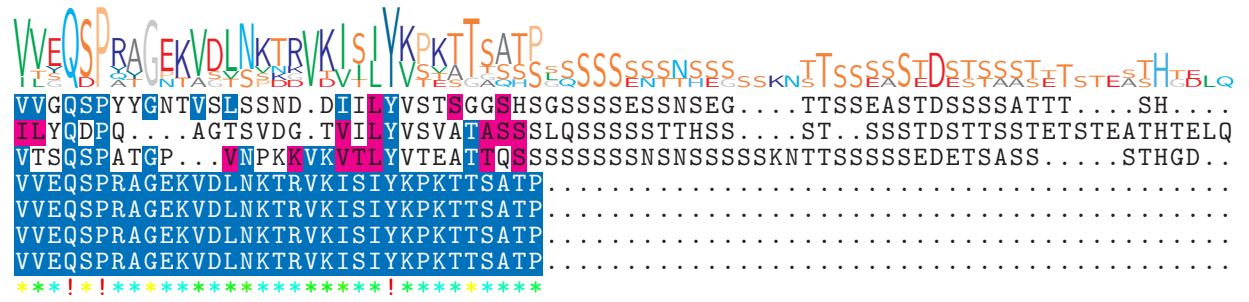
NTDB id 384 SMU RS02325 WP 002263039.1  
 NTDB id 467 HSISS4 RS06915 WP 021143821.1  
 NTDB id 1120346 EL092 RS03025 WP 012000094.1  
 NTDB id 146 SP RS08570 WP 000614538.1  
 NTDB id 216 SPD RS08205 WP 000614552.1  
 NTDB id 182 SPR RS07820 WP 000614552.1  
 NTDB id 257 KZH43 RS07655 WP 220041236.1  
 consensus



553  
559  
551  
626  
626  
626  
626

logo

NTDB id 384 SMU RS02325 WP 002263039.1  
 NTDB id 467 HSISS4 RS06915 WP 021143821.1  
 NTDB id 1120346 EL092 RS03025 WP 012000094.1  
 NTDB id 146 SP RS08570 WP 000614538.1  
 NTDB id 216 SPD RS08205 WP 000614552.1  
 NTDB id 182 SPR RS07820 WP 000614552.1  
 NTDB id 257 KZH43 RS07655 WP 220041236.1  
 consensus



616  
 624  
 617  
 659  
 659  
 659  
 659

non conserved  
 similar  
 ≥ 50% conserved