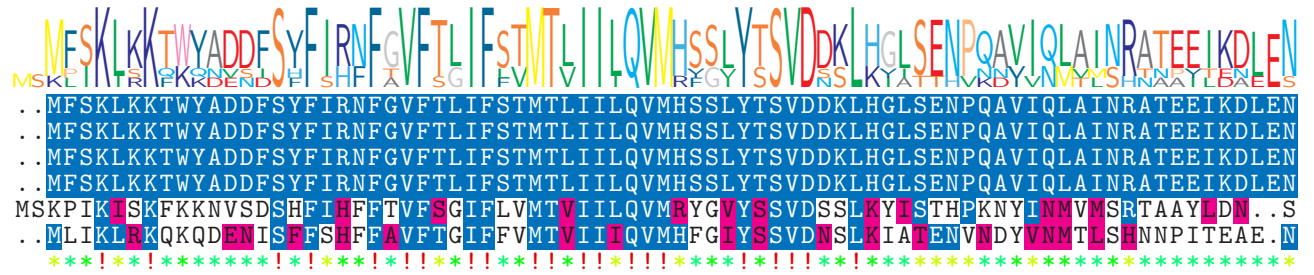


logo

NTDB id 259 KZH43 RS03480 WP 000491790.1
 NTDB id 218 SPD RS03780 WP 000491790.1
 NTDB id 184 SPR RS03565 WP 000491790.1
 NTDB id 148 SP RS03910 WP 000491790.1
 NTDB id 1112227 GBSCOH1 RS04880 WP 000042576.1
 NTDB id 363 SMU RS05195 WP 002262215.1
 consensus



78
78
78
78
78
78
77

logo

NTDB id 259 KZH43 RS03480 WP 000491790.1
 NTDB id 218 SPD RS03780 WP 000491790.1
 NTDB id 184 SPR RS03565 WP 000491790.1
 NTDB id 148 SP RS03910 WP 000491790.1
 NTDB id 1112227 GBSCOH1 RS04880 WP 000042576.1
 NTDB id 363 SMU RS05195 WP 002262215.1
 consensus



158
158
158
158
158
156
155

logo

NTDB id 259 KZH43 RS03480 WP 000491790.1
 NTDB id 218 SPD RS03780 WP 000491790.1
 NTDB id 184 SPR RS03565 WP 000491790.1
 NTDB id 148 SP RS03910 WP 000491790.1
 NTDB id 1112227 GBSCOH1 RS04880 WP 000042576.1
 NTDB id 363 SMU RS05195 WP 002262215.1
 consensus



238
238
238
238
238
236
235

logo

NTDB id 259 KZH43 RS03480 WP 000491790.1
 NTDB id 218 SPD RS03780 WP 000491790.1
 NTDB id 184 SPR RS03565 WP 000491790.1
 NTDB id 148 SP RS03910 WP 000491790.1
 NTDB id 1112227 GBSCOH1 RS04880 WP 000042576.1
 NTDB id 363 SMU RS05195 WP 002262215.1
 consensus



318
318
318
318
316
315

logo

NTDB id 259 KZH43 RS03480 WP 000491790.1
 NTDB id 218 SPD RS03780 WP 000491790.1
 NTDB id 184 SPR RS03565 WP 000491790.1
 NTDB id 148 SP RS03910 WP 000491790.1
 NTDB id 1112227 GBSCOH1 RS04880 WP 000042576.1
 NTDB id 363 SMU RS05195 WP 002262215.1
 consensus



398
398
398
398
398
396
395

logo

NTDB id 259 KZH43 RS03480 WP 000491790.1
 NTDB id 218 SPD RS03780 WP 000491790.1
 NTDB id 184 SPR RS03565 WP 000491790.1
 NTDB id 148 SP RS03910 WP 000491790.1
 NTDB id 1112227 GBSCOH1 RS04880 WP 000042576.1
 NTDB id 363 SMU RS05195 WP 002262215.1
 consensus



444
 444
 444
 444
 437
 435

- non conserved
- similar
- ≥ 50% conserved