

logo

NTDB id 109948 ACGHAD RS02370 WP 339617844.1
 NTDB id 125 BSU 00870 NP 387968.1
 NTDB id 279 KZH43 RS00140 WP 074017595.1
 NTDB id 238 SPD RS00140 WP 074017595.1
 NTDB id 204 SPR RS00140 WP 074017595.1
 NTDB id 169 SP RS00155 WP 074017595.1
 NTDB id 509 SM12261 RS00130 WP 078228442.1
 NTDB id 537 SMSK321 RS07120 WP 080550752.1
 consensus



80
77
74
74
74
74
74
74
74

logo

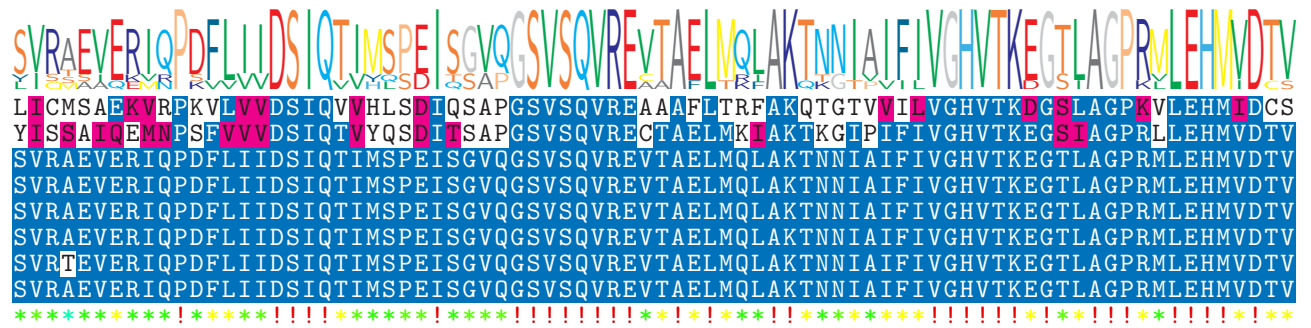
NTDB id 109948 ACGHAD RS02370 WP 339617844.1
 NTDB id 125 BSU 00870 NP 387968.1
 NTDB id 279 KZH43 RS00140 WP 074017595.1
 NTDB id 238 SPD RS00140 WP 074017595.1
 NTDB id 204 SPR RS00140 WP 074017595.1
 NTDB id 169 SP RS00155 WP 074017595.1
 NTDB id 509 SM12261 RS00130 WP 078228442.1
 NTDB id 537 SMSK321 RS07120 WP 080550752.1
 consensus



159
157
153
153
153
153
153
153
153

logo

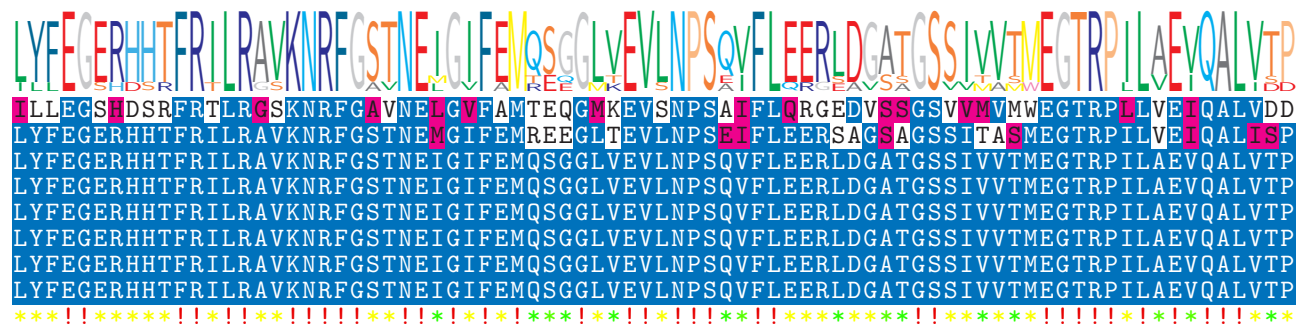
NTDB id 109948 ACGHAD RS02370 WP 339617844.1
 NTDB id 125 BSU 00870 NP 387968.1
 NTDB id 279 KZH43 RS00140 WP 074017595.1
 NTDB id 238 SPD RS00140 WP 074017595.1
 NTDB id 204 SPR RS00140 WP 074017595.1
 NTDB id 169 SP RS00155 WP 074017595.1
 NTDB id 509 SM12261 RS00130 WP 078228442.1
 NTDB id 537 SMSK321 RS07120 WP 080550752.1
 consensus



239
237
233
233
233
233
233
233
233

logo

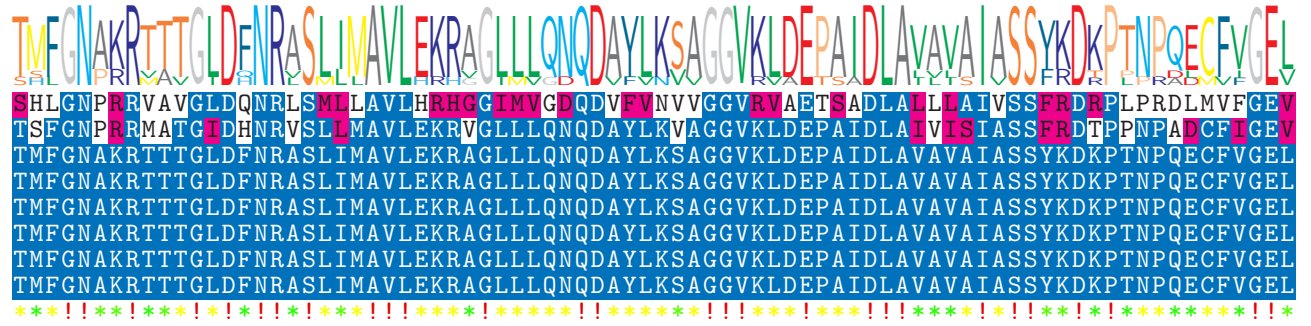
NTDB id 109948 ACGHAD RS02370 WP 339617844.1
 NTDB id 125 BSU 00870 NP 387968.1
 NTDB id 279 KZH43 RS00140 WP 074017595.1
 NTDB id 238 SPD RS00140 WP 074017595.1
 NTDB id 204 SPR RS00140 WP 074017595.1
 NTDB id 169 SP RS00155 WP 074017595.1
 NTDB id 509 SM12261 RS00130 WP 078228442.1
 NTDB id 537 SMSK321 RS07120 WP 080550752.1
 consensus



319
317
313
313
313
313
313
313
313

logo

NTDB id 109948 ACGHAD RS02370 WP 339617844.1
 NTDB id 125 BSU 00870 NP 387968.1
 NTDB id 279 KZH43 RS00140 WP 074017595.1
 NTDB id 238 SPD RS00140 WP 074017595.1
 NTDB id 204 SPR RS00140 WP 074017595.1
 NTDB id 169 SP RS00155 WP 074017595.1
 NTDB id 509 SM12261 RS00130 WP 078228442.1
 NTDB id 537 SMSK321 RS07120 WP 080550752.1
 consensus



399
397
393
393
393
393
393
393

logo

NTDB id 109948 ACGHAD RS02370 WP 339617844.1
 NTDB id 125 BSU 00870 NP 387968.1
 NTDB id 279 KZH43 RS00140 WP 074017595.1
 NTDB id 238 SPD RS00140 WP 074017595.1
 NTDB id 204 SPR RS00140 WP 074017595.1
 NTDB id 169 SP RS00155 WP 074017595.1
 NTDB id 509 SM12261 RS00130 WP 078228442.1
 NTDB id 537 SMSK321 RS07120 WP 080550752.1
 consensus



457
458
453
453
453
453
453
453

- non conserved
- similar
- ≥ 50% conserved