





logo

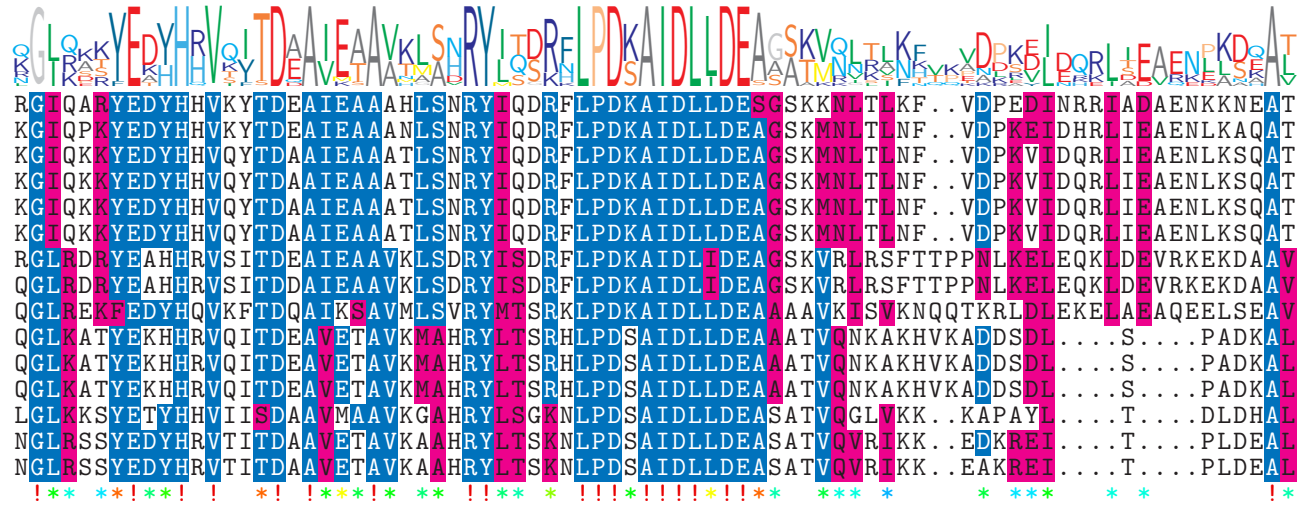
NTDB id 601 KW2 RS02615 WP 021036805.1  
 NTDB id 378 SMU RS02690 WP 002263569.1  
 NTDB id 241 SP RS04015 WP 000882523.1  
 NTDB id 281 KZH43 RS03550 WP 000882517.1  
 NTDB id 245 SPD RS03860 WP 000882517.1  
 NTDB id 243 SPR RS03635 WP 000882517.1  
 NTDB id 1080651 ACKW6F RS00585 WP 007496263.1  
 NTDB id 85 BSU 00860 NP 387967.1  
 NTDB id 610 V4T04 RS10165 WP 012897346.1  
 NTDB id 290 KZH43 RS10025 WP 001109677.1  
 NTDB id 289 SPD RS10700 WP 001109677.1  
 NTDB id 287 SP RS11210 WP 001109712.1  
 NTDB id 377 SMU RS09275 WP 002262344.1  
 NTDB id 297 STER RS00545 WP 011680614.1  
 NTDB id 329 STU RS10020 WP 011225298.1  
 consensus



295  
 302  
 301  
 301  
 301  
 301  
 352  
 351  
 365  
 378  
 378  
 378  
 382  
 385  
 385

logo

NTDB id 601 KW2 RS02615 WP 021036805.1  
 NTDB id 378 SMU RS02690 WP 002263569.1  
 NTDB id 241 SP RS04015 WP 000882523.1  
 NTDB id 281 KZH43 RS03550 WP 000882517.1  
 NTDB id 245 SPD RS03860 WP 000882517.1  
 NTDB id 243 SPR RS03635 WP 000882517.1  
 NTDB id 1080651 ACKW6F RS00585 WP 007496263.1  
 NTDB id 85 BSU 00860 NP 387967.1  
 NTDB id 610 V4T04 RS10165 WP 012897346.1  
 NTDB id 290 KZH43 RS10025 WP 001109677.1  
 NTDB id 289 SPD RS10700 WP 001109677.1  
 NTDB id 287 SP RS11210 WP 001109712.1  
 NTDB id 377 SMU RS09275 WP 002262344.1  
 NTDB id 297 STER RS00545 WP 011680614.1  
 NTDB id 329 STU RS10020 WP 011225298.1  
 consensus



373  
 380  
 379  
 379  
 379  
 379  
 432  
 431  
 445  
 450  
 450  
 450  
 452  
 455  
 455



logo

NTDB id 601 KW2 RS02615 WP 021036805.1  
 NTDB id 378 SMU RS02690 WP 002263569.1  
 NTDB id 241 SP RS04015 WP 000882523.1  
 NTDB id 281 KZH43 RS03550 WP 000882517.1  
 NTDB id 245 SPD RS03860 WP 000882517.1  
 NTDB id 243 SPR RS03635 WP 000882517.1  
 NTDB id 1080651 ACKW6F RS00585 WP 007496263.1  
 NTDB id 85 BSU 00860 NP 387967.1  
 NTDB id 610 V4T04 RS10165 WP 012897346.1  
 NTDB id 290 KZH43 RS10025 WP 001109677.1  
 NTDB id 289 SPD RS10700 WP 001109677.1  
 NTDB id 287 SP RS11210 WP 001109712.1  
 NTDB id 377 SMU RS09275 WP 002262344.1  
 NTDB id 297 STER RS00545 WP 011680614.1  
 NTDB id 329 STU RS10020 WP 011225298.1

consensus



605  
612  
611  
611  
611  
611  
672  
671  
680  
675  
675  
675  
678  
681  
681

logo

NTDB id 601 KW2 RS02615 WP 021036805.1  
 NTDB id 378 SMU RS02690 WP 002263569.1  
 NTDB id 241 SP RS04015 WP 000882523.1  
 NTDB id 281 KZH43 RS03550 WP 000882517.1  
 NTDB id 245 SPD RS03860 WP 000882517.1  
 NTDB id 243 SPR RS03635 WP 000882517.1  
 NTDB id 1080651 ACKW6F RS00585 WP 007496263.1  
 NTDB id 85 BSU 00860 NP 387967.1  
 NTDB id 610 V4T04 RS10165 WP 012897346.1  
 NTDB id 290 KZH43 RS10025 WP 001109677.1  
 NTDB id 289 SPD RS10700 WP 001109677.1  
 NTDB id 287 SP RS11210 WP 001109712.1  
 NTDB id 377 SMU RS09275 WP 002262344.1  
 NTDB id 297 STER RS00545 WP 011680614.1  
 NTDB id 329 STU RS10020 WP 011225298.1

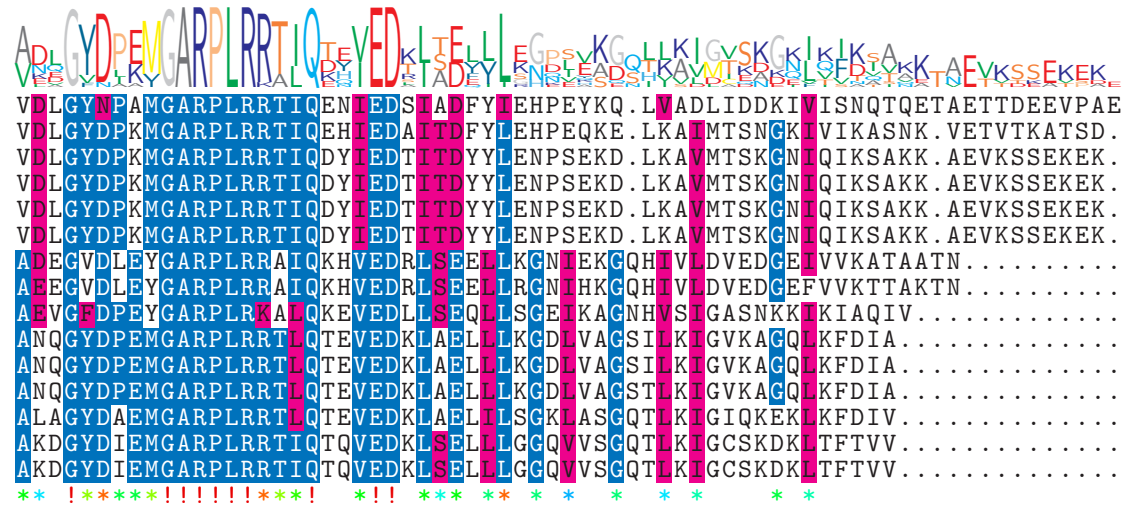
consensus



680  
687  
686  
686  
686  
686  
752  
751  
760  
755  
755  
755  
758  
761  
761

logo

NTDB id 601 KW2 RS02615 WP 021036805.1  
 NTDB id 378 SMU RS02690 WP 002263569.1  
 NTDB id 241 SP RS04015 WP 000882523.1  
 NTDB id 281 KZH43 RS03550 WP 000882517.1  
 NTDB id 245 SPD RS03860 WP 000882517.1  
 NTDB id 243 SPR RS03635 WP 000882517.1  
 NTDB id 1080651 ACKW6F RS00585 WP 007496263.1  
 NTDB id 85 BSU 00860 NP 387967.1  
 NTDB id 610 V4T04 RS10165 WP 012897346.1  
 NTDB id 290 KZH43 RS10025 WP 001109677.1  
 NTDB id 289 SPD RS10700 WP 001109677.1  
 NTDB id 287 SP RS11210 WP 001109712.1  
 NTDB id 377 SMU RS09275 WP 002262344.1  
 NTDB id 297 STER RS00545 WP 011680614.1  
 NTDB id 329 STU RS10020 WP 011225298.1  
 consensus



non conserved  
 similar  
 ≥ 50% conserved