

logo

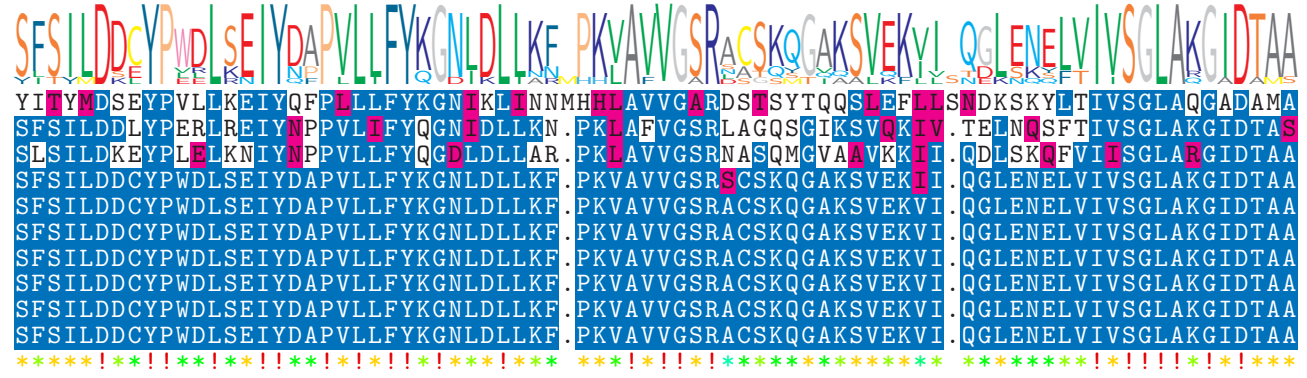
NTDB id 25 SA RS06185 WP 000593194.1
 NTDB id 599 KW2 RS05940 WP 021037268.1
 NTDB id 407 SMU RS04605 WP 002262865.1
 NTDB id 525 SMSK321 RS06295 WP 000705298.1
 NTDB id 497 SM12261 RS05565 WP 000705318.1
 NTDB id 106279 AABA14 RS05990 WP 338168367.1
 NTDB id 267 KZH43 RS05590 WP 000705306.1
 NTDB id 226 SPD RS05990 WP 000705306.1
 NTDB id 192 SPR RS05715 WP 000705306.1
 NTDB id 157 SP RS06205 WP 000705306.1
 consensus



78
71
70
72
72
72
72
72
72
72
72

logo

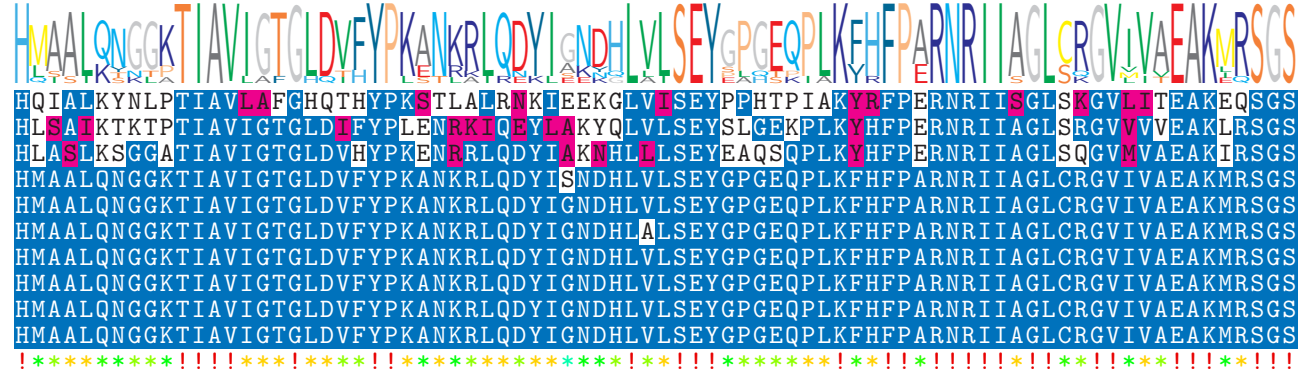
NTDB id 25 SA RS06185 WP 000593194.1
 NTDB id 599 KW2 RS05940 WP 021037268.1
 NTDB id 407 SMU RS04605 WP 002262865.1
 NTDB id 525 SMSK321 RS06295 WP 000705298.1
 NTDB id 497 SM12261 RS05565 WP 000705318.1
 NTDB id 106279 AABA14 RS05990 WP 338168367.1
 NTDB id 267 KZH43 RS05590 WP 000705306.1
 NTDB id 226 SPD RS05990 WP 000705306.1
 NTDB id 192 SPR RS05715 WP 000705306.1
 NTDB id 157 SP RS06205 WP 000705306.1
 consensus



158
149
148
150
150
150
150
150
150
150
150

logo

NTDB id 25 SA RS06185 WP 000593194.1
 NTDB id 599 KW2 RS05940 WP 021037268.1
 NTDB id 407 SMU RS04605 WP 002262865.1
 NTDB id 525 SMSK321 RS06295 WP 000705298.1
 NTDB id 497 SM12261 RS05565 WP 000705318.1
 NTDB id 106279 AABA14 RS05990 WP 338168367.1
 NTDB id 267 KZH43 RS05590 WP 000705306.1
 NTDB id 226 SPD RS05990 WP 000705306.1
 NTDB id 192 SPR RS05715 WP 000705306.1
 NTDB id 157 SP RS06205 WP 000705306.1
 consensus



238
229
228
230
230
230
230
230
230
230
230

logo

NTDB id 25 SA RS06185 WP 000593194.1
NTDB id 599 KW2 RS05940 WP 021037268.1
NTDB id 407 SMU RS04605 WP 002262865.1
NTDB id 525 SMSK321 RS06295 WP 000705298.1
NTDB id 497 SM12261 RS05565 WP 000705318.1
NTDB id 106279 AABA14 RS05990 WP 338168367.1
NTDB id 267 KZH43 RS05590 WP 000705306.1
NTDB id 226 SPD RS05990 WP 000705306.1
NTDB id 192 SPR RS05715 WP 000705306.1
NTDB id 157 SP RS06205 WP 000705306.1
consensus



non conserved
 similar
 ≥ 50% conserved