

logo

NTDB id 1059212 ACFKHJ RS06370 WP 392452092.1  
 NTDB id 262 KZH43 RS08770 WP 001036779.1  
 NTDB id 221 SPD RS09380 WP 001036779.1  
 NTDB id 187 SPR RS08930 WP 001036779.1  
 NTDB id 152 SP RS09870 WP 001036779.1  
 consensus



80  
75  
75  
75  
75

logo

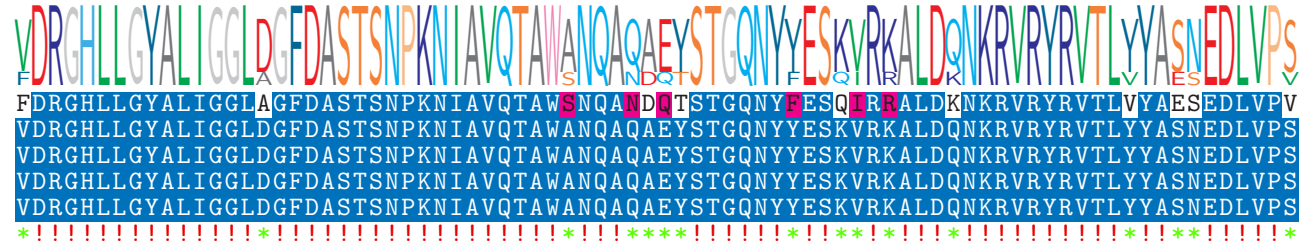
NTDB id 1059212 ACFKHJ RS06370 WP 392452092.1  
 NTDB id 262 KZH43 RS08770 WP 001036779.1  
 NTDB id 221 SPD RS09380 WP 001036779.1  
 NTDB id 187 SPR RS08930 WP 001036779.1  
 NTDB id 152 SP RS09870 WP 001036779.1  
 consensus



160  
155  
155  
155  
155

logo

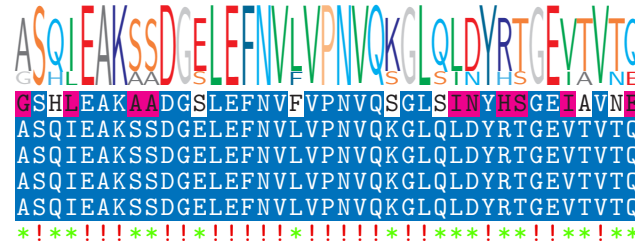
NTDB id 1059212 ACFKHJ RS06370 WP 392452092.1  
 NTDB id 262 KZH43 RS08770 WP 001036779.1  
 NTDB id 221 SPD RS09380 WP 001036779.1  
 NTDB id 187 SPR RS08930 WP 001036779.1  
 NTDB id 152 SP RS09870 WP 001036779.1  
 consensus



240  
235  
235  
235  
235

logo

NTDB id 1059212 ACFKHJ RS06370 WP 392452092.1  
 NTDB id 262 KZH43 RS08770 WP 001036779.1  
 NTDB id 221 SPD RS09380 WP 001036779.1  
 NTDB id 187 SPR RS08930 WP 001036779.1  
 NTDB id 152 SP RS09870 WP 001036779.1  
 consensus



279  
274  
274  
274  
274

non conserved  
 similar  
 ≥ 50% conserved