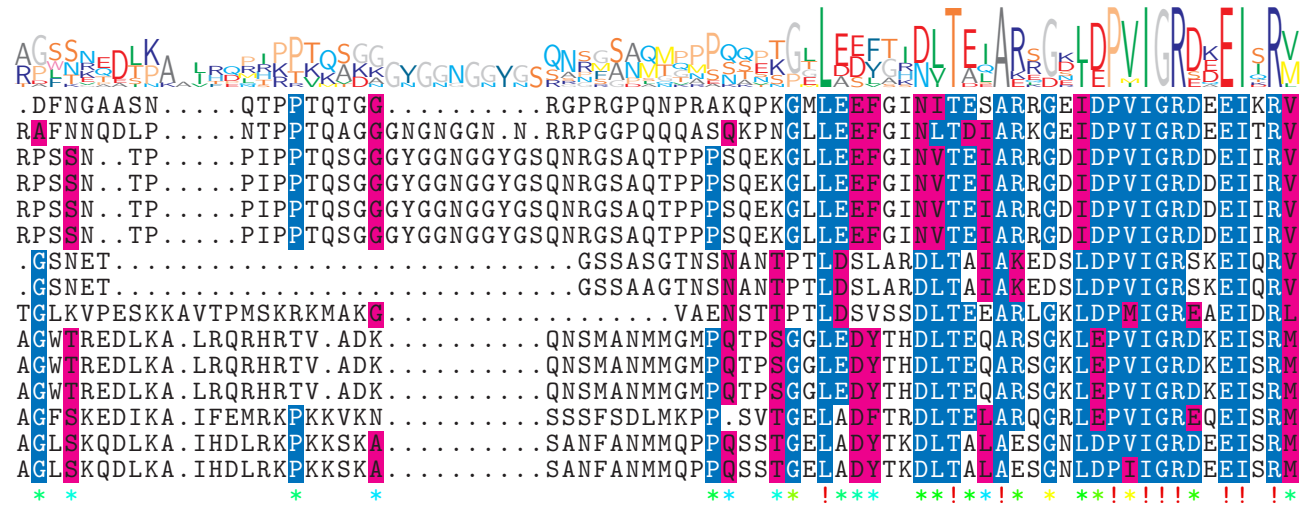




logo

NTDB id 601 KW2 RS02615 WP 021036805.1  
 NTDB id 378 SMU RS02690 WP 002263569.1  
 NTDB id 241 SP RS04015 WP 000882523.1  
 NTDB id 281 KZH43 RS03550 WP 000882517.1  
 NTDB id 245 SPD RS03860 WP 000882517.1  
 NTDB id 243 SPR RS03635 WP 000882517.1  
 NTDB id 1031695 AB7T04 RS00580 WP 007410388.1  
 NTDB id 85 BSU 00860 NP 387967.1  
 NTDB id 610 V4T04 RS10165 WP 012897346.1  
 NTDB id 290 KZH43 RS10025 WP 001109677.1  
 NTDB id 289 SPD RS10700 WP 001109677.1  
 NTDB id 287 SP RS11210 WP 001109712.1  
 NTDB id 377 SMU RS09275 WP 002262344.1  
 NTDB id 297 STER RS00545 WP 011680614.1  
 NTDB id 329 STU RS10020 WP 011225298.1  
 consensus



136  
143  
142  
142  
142  
142  
192  
192  
205  
218  
218  
218  
222  
225  
225

logo

NTDB id 601 KW2 RS02615 WP 021036805.1  
 NTDB id 378 SMU RS02690 WP 002263569.1  
 NTDB id 241 SP RS04015 WP 000882523.1  
 NTDB id 281 KZH43 RS03550 WP 000882517.1  
 NTDB id 245 SPD RS03860 WP 000882517.1  
 NTDB id 243 SPR RS03635 WP 000882517.1  
 NTDB id 1031695 AB7T04 RS00580 WP 007410388.1  
 NTDB id 85 BSU 00860 NP 387967.1  
 NTDB id 610 V4T04 RS10165 WP 012897346.1  
 NTDB id 290 KZH43 RS10025 WP 001109677.1  
 NTDB id 289 SPD RS10700 WP 001109677.1  
 NTDB id 287 SP RS11210 WP 001109712.1  
 NTDB id 377 SMU RS09275 WP 002262344.1  
 NTDB id 297 STER RS00545 WP 011680614.1  
 NTDB id 329 STU RS10020 WP 011225298.1  
 consensus



216  
223  
222  
222  
222  
222  
272  
272  
285  
298  
298  
298  
302  
305  
305

logo

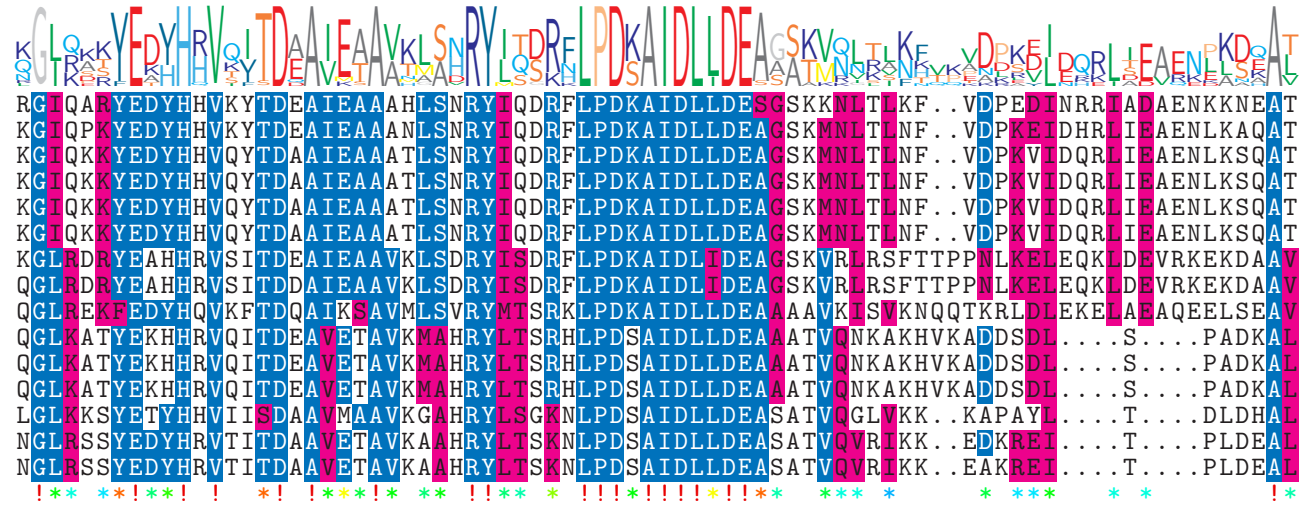
NTDB id 601 KW2 RS02615 WP 021036805.1  
 NTDB id 378 SMU RS02690 WP 002263569.1  
 NTDB id 241 SP RS04015 WP 000882523.1  
 NTDB id 281 KZH43 RS03550 WP 000882517.1  
 NTDB id 245 SPD RS03860 WP 000882517.1  
 NTDB id 243 SPR RS03635 WP 000882517.1  
 NTDB id 1031695 AB7T04 RS00580 WP 007410388.1  
 NTDB id 85 BSU 00860 NP 387967.1  
 NTDB id 610 V4T04 RS10165 WP 012897346.1  
 NTDB id 290 KZH43 RS10025 WP 001109677.1  
 NTDB id 289 SPD RS10700 WP 001109677.1  
 NTDB id 287 SP RS11210 WP 001109712.1  
 NTDB id 377 SMU RS09275 WP 002262344.1  
 NTDB id 297 STER RS00545 WP 011680614.1  
 NTDB id 329 STU RS10020 WP 011225298.1  
 consensus



295  
302  
301  
301  
301  
301  
351  
351  
365  
378  
378  
378  
382  
385  
385

logo

NTDB id 601 KW2 RS02615 WP 021036805.1  
 NTDB id 378 SMU RS02690 WP 002263569.1  
 NTDB id 241 SP RS04015 WP 000882523.1  
 NTDB id 281 KZH43 RS03550 WP 000882517.1  
 NTDB id 245 SPD RS03860 WP 000882517.1  
 NTDB id 243 SPR RS03635 WP 000882517.1  
 NTDB id 1031695 AB7T04 RS00580 WP 007410388.1  
 NTDB id 85 BSU 00860 NP 387967.1  
 NTDB id 610 V4T04 RS10165 WP 012897346.1  
 NTDB id 290 KZH43 RS10025 WP 001109677.1  
 NTDB id 289 SPD RS10700 WP 001109677.1  
 NTDB id 287 SP RS11210 WP 001109712.1  
 NTDB id 377 SMU RS09275 WP 002262344.1  
 NTDB id 297 STER RS00545 WP 011680614.1  
 NTDB id 329 STU RS10020 WP 011225298.1  
 consensus



373  
380  
379  
379  
379  
379  
431  
431  
445  
450  
450  
450  
452  
455  
455



logo

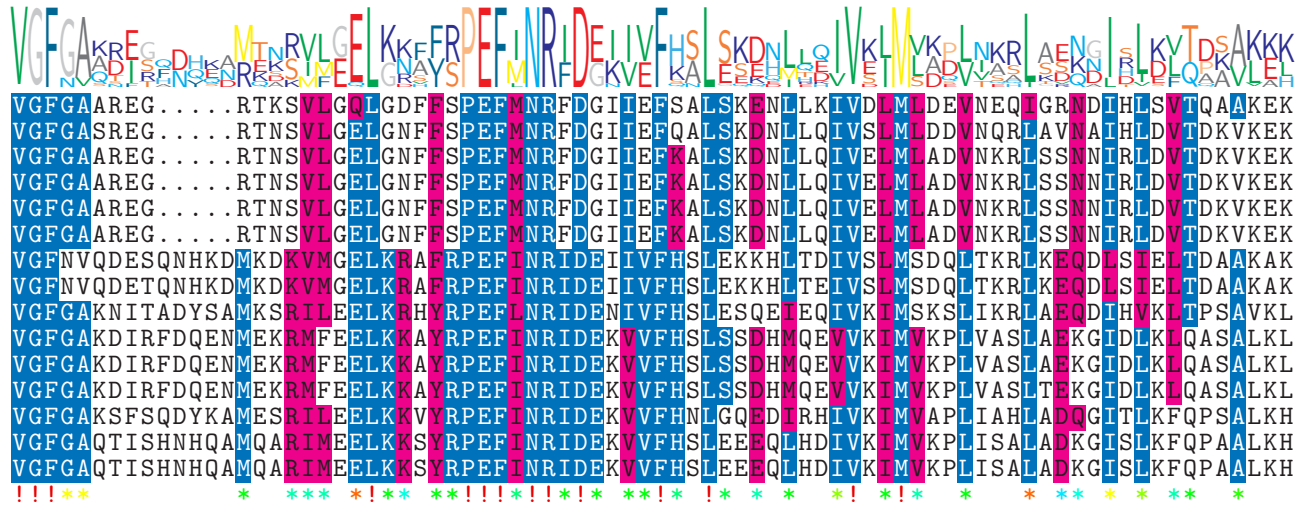
NTDB id 601 KW2 RS02615 WP 021036805.1  
 NTDB id 378 SMU RS02690 WP 002263569.1  
 NTDB id 241 SP RS04015 WP 000882523.1  
 NTDB id 281 KZH43 RS03550 WP 000882517.1  
 NTDB id 245 SPD RS03860 WP 000882517.1  
 NTDB id 243 SPR RS03635 WP 000882517.1  
 NTDB id 1031695 AB7T04 RS00580 WP 007410388.1  
 NTDB id 85 BSU 00860 NP 387967.1  
 NTDB id 610 V4T04 RS10165 WP 012897346.1  
 NTDB id 290 KZH43 RS10025 WP 001109677.1  
 NTDB id 289 SPD RS10700 WP 001109677.1  
 NTDB id 287 SP RS11210 WP 001109712.1  
 NTDB id 377 SMU RS09275 WP 002262344.1  
 NTDB id 297 STER RS00545 WP 011680614.1  
 NTDB id 329 STU RS10020 WP 011225298.1  
 consensus



604  
611  
610  
610  
610  
610  
670  
670  
679  
674  
674  
674  
677  
680  
680

logo

NTDB id 601 KW2 RS02615 WP 021036805.1  
 NTDB id 378 SMU RS02690 WP 002263569.1  
 NTDB id 241 SP RS04015 WP 000882523.1  
 NTDB id 281 KZH43 RS03550 WP 000882517.1  
 NTDB id 245 SPD RS03860 WP 000882517.1  
 NTDB id 243 SPR RS03635 WP 000882517.1  
 NTDB id 1031695 AB7T04 RS00580 WP 007410388.1  
 NTDB id 85 BSU 00860 NP 387967.1  
 NTDB id 610 V4T04 RS10165 WP 012897346.1  
 NTDB id 290 KZH43 RS10025 WP 001109677.1  
 NTDB id 289 SPD RS10700 WP 001109677.1  
 NTDB id 287 SP RS11210 WP 001109712.1  
 NTDB id 377 SMU RS09275 WP 002262344.1  
 NTDB id 297 STER RS00545 WP 011680614.1  
 NTDB id 329 STU RS10020 WP 011225298.1  
 consensus



679  
686  
685  
685  
685  
685  
750  
750  
759  
754  
754  
754  
757  
760  
760

logo

NTDB id 601 KW2 RS02615 WP 021036805.1	LVDLGYNPAMGARPLRRTIQENTIEDSTADFYIEHPEYKQ.LVADLIDDKIVISNQTQETAETTDEEVPAE	748
NTDB id 378 SMU RS02690 WP 002263569.1	LVDLGYDPKMGARPLRRTIQEHIEDAITDFYLEHPEQKE.LKAIMTSNGKIVIKASNK.VETVTKATSD.	753
NTDB id 241 SP RS04015 WP 000882523.1	LVDLGYDPKMGARPLRRTIQDYIEDTITDYYLENPSEKD.LKAVMTSKGNIQIKSAKK.AEVKSSEKEK.	752
NTDB id 281 KZH43 RS03550 WP 000882517.1	LVDLGYDPKMGARPLRRTIQDYIEDTITDYYLENPSEKD.LKAVMTSKGNIQIKSAKK.AEVKSSEKEK.	752
NTDB id 245 SPD RS03860 WP 000882517.1	LVDLGYDPKMGARPLRRTIQDYIEDTITDYYLENPSEKD.LKAVMTSKGNIQIKSAKK.AEVKSSEKEK.	752
NTDB id 243 SPR RS03635 WP 000882517.1	LVDLGYDPKMGARPLRRTIQDYIEDTITDYYLENPSEKD.LKAVMTSKGNIQIKSAKK.AEVKSSEKEK.	752
NTDB id 1031695 AB7T04 RS00580 WP 007410388.1	VAEEGVLDLEYGARPLRRRAIQKHVEDRLSEELLRGNIDKQGHIVLDVEDGEFVVKTTAKTN.....	810
NTDB id 85 BSU 00860 NP 387967.1	VAEEGVLDLEYGARPLRRRAIQKHVEDRLSEELLRGNIHKGQHIVLDVEDGEFVVKTTAKTN.....	810
NTDB id 610 V4T04 RS10165 WP 012897346.1	IAEVGFDPPEYGARPLRKALQKEVEDLLSEQLLSGETKAGNHVSI GASNKKTKIAQIV.....	816
NTDB id 290 KZH43 RS10025 WP 001109677.1	LANQGYDPEMGARPLRRTLQTEVEDKLAELLLKGDLVAGSILKIGVKAGQLKFDIA.....	810
NTDB id 289 SPD RS10700 WP 001109677.1	LANQGYDPEMGARPLRRTLQTEVEDKLAELLLKGDLVAGSILKIGVKAGQLKFDIA.....	810
NTDB id 287 SP RS11210 WP 001109712.1	LANQGYDPEMGARPLRRTLQTEVEDKLAELLLKGDLVAGSTLKIIGVKAGQLKFDIA.....	810
NTDB id 377 SMU RS09275 WP 002262344.1	LALAGYDAEMGARPLRRTLQTEVEDKLAELILSGKLASGQTLKIIGIQKEKLKFDIV.....	813
NTDB id 297 STER RS00545 WP 011680614.1	LAKDGYDIEMGARPLRRTIQTVEDKLSLELLGGQVVSQTLLKIGCSKDKLTFTVV.....	816
NTDB id 329 STU RS10020 WP 011225298.1	LAKDGYDIEMGARPLRRTIQTVEDKLSLELLGGQVVSQTLLKIGCSKDKLTFTVV.....	816
consensus	*** !*****!!!!!!***! *!! *** ** * * * * * * * * * *	

- X non conserved
- X similar
- X ≥ 50% conserved