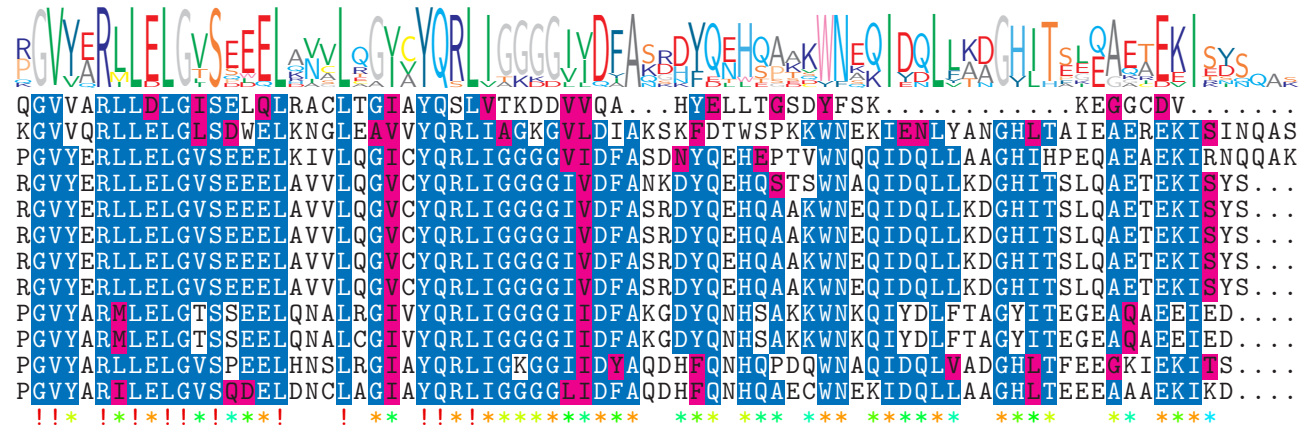


logo

NTDB id 617 LCA RS06480 WP 011375001.1
 NTDB id 586 KW2 RS10855 WP 011836048.1
 NTDB id 429 SGD RS09420 WP 012130942.1
 NTDB id 500 SM12261 RS00945 WP 000249545.1
 NTDB id 270 KZH43 RS09265 WP 000249564.1
 NTDB id 229 SPD RS09895 WP 000249564.1
 NTDB id 195 SPR RS09430 WP 000249564.1
 NTDB id 160 SP RS10380 WP 000249564.1
 NTDB id 385 SMU RS09035 WP 002263435.1
 NTDB id 394 FSA28 RS09405 WP 002291652.1
 NTDB id 1030326 AB6M99 RS10475 WP 121835694.1
 NTDB id 584 DLJ51 RS00890 WP 019777327.1
 consensus

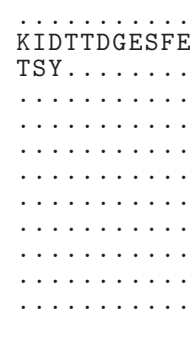


296
 315
 316
 313
 313
 313
 313
 313
 313
 313
 313
 313
 313
 315

logo

NTDB id 617 LCA RS06480 WP 011375001.1
 NTDB id 586 KW2 RS10855 WP 011836048.1
 NTDB id 429 SGD RS09420 WP 012130942.1
 NTDB id 500 SM12261 RS00945 WP 000249545.1
 NTDB id 270 KZH43 RS09265 WP 000249564.1
 NTDB id 229 SPD RS09895 WP 000249564.1
 NTDB id 195 SPR RS09430 WP 000249564.1
 NTDB id 160 SP RS10380 WP 000249564.1
 NTDB id 385 SMU RS09035 WP 002263435.1
 NTDB id 394 FSA28 RS09405 WP 002291652.1
 NTDB id 1030326 AB6M99 RS10475 WP 121835694.1
 NTDB id 584 DLJ51 RS00890 WP 019777327.1
 consensus

KIDTTDGESFE



296
 326
 319
 313
 313
 313
 313
 313
 313
 313
 313
 315

X non conserved
 X similar
 X ≥ 50% conserved