

logo

NTDB id 1026421 AB3X10 RS16015 WP 369976264.1  
 NTDB id 125 BSU 00870 NP 387968.1  
 NTDB id 279 KZH43 RS00140 WP 074017595.1  
 NTDB id 238 SPD RS00140 WP 074017595.1  
 NTDB id 204 SPR RS00140 WP 074017595.1  
 NTDB id 169 SP RS00155 WP 074017595.1  
 NTDB id 509 SM12261 RS00130 WP 078228442.1  
 NTDB id 537 SMSK321 RS07120 WP 080550752.1  
 consensus



79  
74  
71  
71  
71  
71  
71  
71

logo

NTDB id 1026421 AB3X10 RS16015 WP 369976264.1  
 NTDB id 125 BSU 00870 NP 387968.1  
 NTDB id 279 KZH43 RS00140 WP 074017595.1  
 NTDB id 238 SPD RS00140 WP 074017595.1  
 NTDB id 204 SPR RS00140 WP 074017595.1  
 NTDB id 169 SP RS00155 WP 074017595.1  
 NTDB id 509 SM12261 RS00130 WP 078228442.1  
 NTDB id 537 SMSK321 RS07120 WP 080550752.1  
 consensus



158  
154  
150  
150  
150  
150  
150  
150

logo

NTDB id 1026421 AB3X10 RS16015 WP 369976264.1  
 NTDB id 125 BSU 00870 NP 387968.1  
 NTDB id 279 KZH43 RS00140 WP 074017595.1  
 NTDB id 238 SPD RS00140 WP 074017595.1  
 NTDB id 204 SPR RS00140 WP 074017595.1  
 NTDB id 169 SP RS00155 WP 074017595.1  
 NTDB id 509 SM12261 RS00130 WP 078228442.1  
 NTDB id 537 SMSK321 RS07120 WP 080550752.1  
 consensus



238  
234  
230  
230  
230  
230  
230  
230

logo

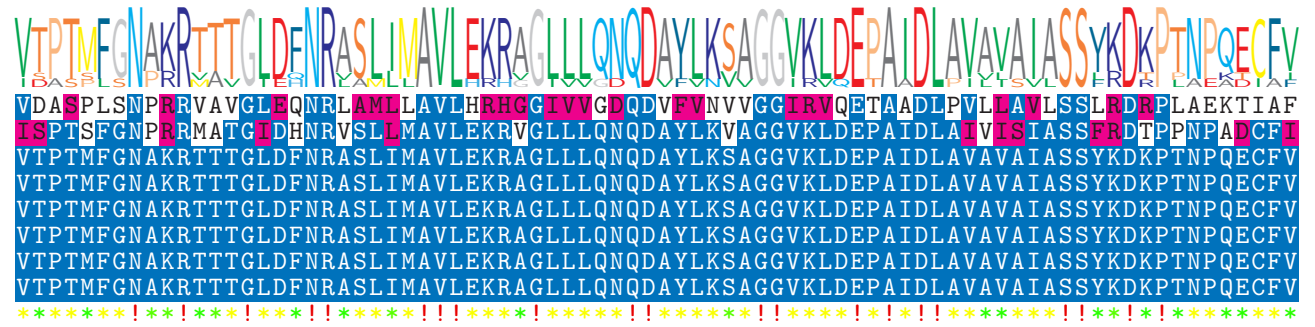
NTDB id 1026421 AB3X10 RS16015 WP 369976264.1  
 NTDB id 125 BSU 00870 NP 387968.1  
 NTDB id 279 KZH43 RS00140 WP 074017595.1  
 NTDB id 238 SPD RS00140 WP 074017595.1  
 NTDB id 204 SPR RS00140 WP 074017595.1  
 NTDB id 169 SP RS00155 WP 074017595.1  
 NTDB id 509 SM12261 RS00130 WP 078228442.1  
 NTDB id 537 SMSK321 RS07120 WP 080550752.1  
 consensus



318  
314  
310  
310  
310  
310  
310  
310

logo

NTDB id 1026421 AB3X10 RS16015 WP 369976264.1  
 NTDB id 125 BSU 00870 NP 387968.1  
 NTDB id 279 KZH43 RS00140 WP 074017595.1  
 NTDB id 238 SPD RS00140 WP 074017595.1  
 NTDB id 204 SPR RS00140 WP 074017595.1  
 NTDB id 169 SP RS00155 WP 074017595.1  
 NTDB id 509 SM12261 RS00130 WP 078228442.1  
 NTDB id 537 SMSK321 RS07120 WP 080550752.1  
 consensus



398  
394  
390  
390  
390  
390  
390  
390

logo

NTDB id 1026421 AB3X10 RS16015 WP 369976264.1  
 NTDB id 125 BSU 00870 NP 387968.1  
 NTDB id 279 KZH43 RS00140 WP 074017595.1  
 NTDB id 238 SPD RS00140 WP 074017595.1  
 NTDB id 204 SPR RS00140 WP 074017595.1  
 NTDB id 169 SP RS00155 WP 074017595.1  
 NTDB id 509 SM12261 RS00130 WP 078228442.1  
 NTDB id 537 SMSK321 RS07120 WP 080550752.1  
 consensus



461  
458  
453  
453  
453  
453  
453  
453

non conserved  
 similar  
 ≥ 50% conserved